

Latest news

Welcome to the Spring 2023 edition of the Goulburn Hospital and Health Service Redevelopment newsletter.

There has been plenty of activity on site over recent months, as the project team progresses the \$165 million Redevelopment to deliver improved medical and health services for the Goulburn community.

The Redevelopment project team has been focused on delivering the final works program which includes renovating and refurbishing parts of the original hospital, transferring services into new spaces, and completing landscaping.

The new ANU Clinical Training Facility is also taking shape and is expected to be completed later this year.



New location for Ambulatory Outpatients

The Ambulatory Outpatients Unit at Goulburn Base Hospital has moved to refurbished spaces in the Heritage Building, as part of the Goulburn Hospital and Health Service Redevelopment.

Ambulatory Outpatients brings together Physiotherapy, Occupational Therapy, Hospital in the Home, Community Nursing, Social Work, Counselling, Speech Pathology, Dietetics, Aged Care Assessment Team, Dementia & Geriatrics, Eye Clinic, Stress Testing, Audiometry & TB Clinic, and Sexual Health.

How to get there?

The new Ambulatory Outpatients Unit and Pathology Collections Services is located on the ground floor of the Heritage Building.

Parking – Park in the main hospital carpark, on-street parking, or use the 15-minute drop-off bay at the front of the hospital main entry. A new carpark for outpatient and day treatment patients (Oncology, Renal, Hospital in the Home) is currently under construction. The Albert Augustus Kerr Car Park will provide additional parking for these patients and is expected to be open in early 2024.

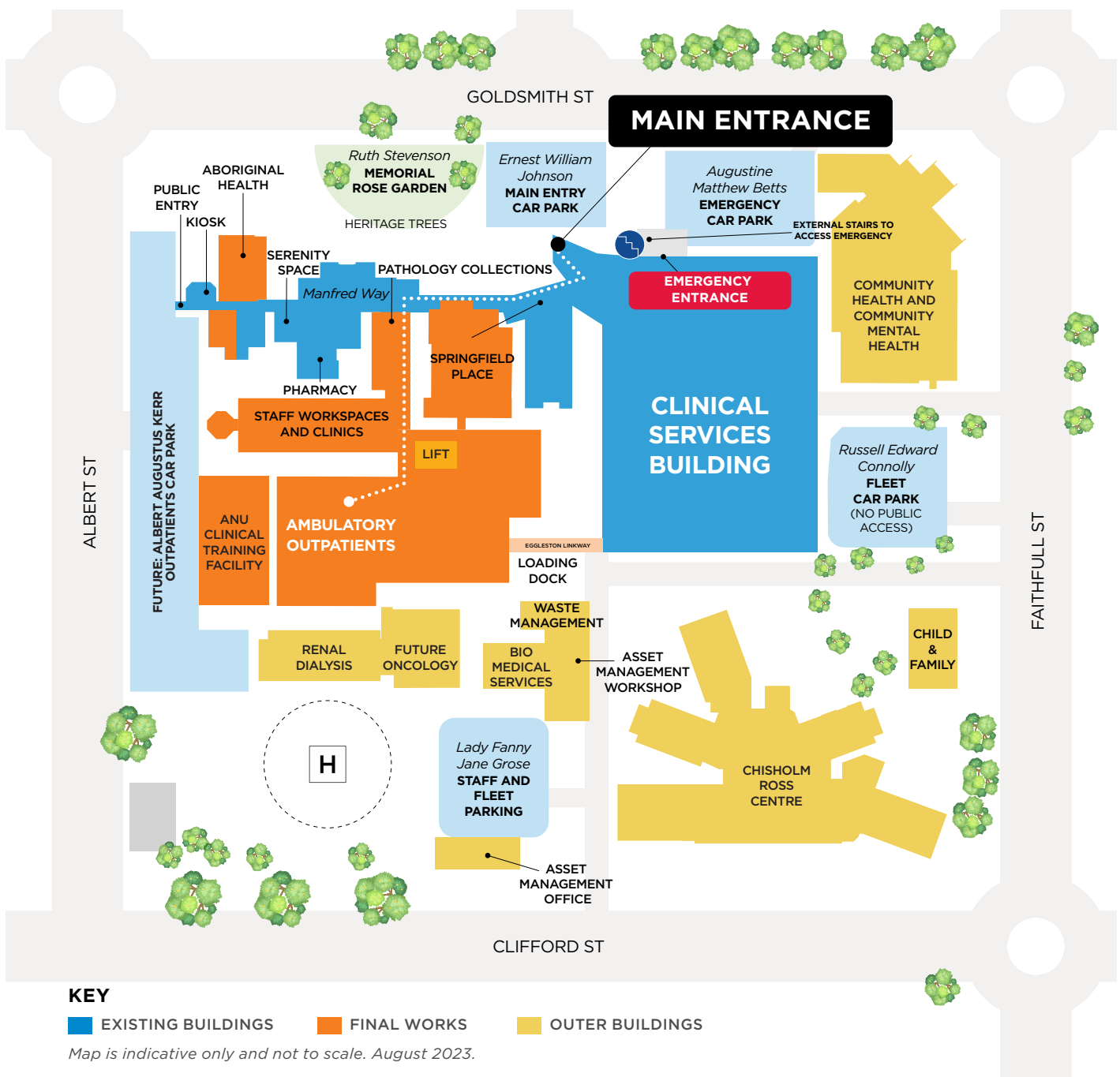
Enter – Through main hospital entrance and turn right through ‘Springfield Place’ heritage exhibition and follow signs.

Distance – The Ambulatory Outpatients Unit is approximately 100m from main entrance door.

Support available – Wheelchairs can be accessed from main reception if required.

Seating – Rest seating is available in main foyer, heritage linkway and corridor towards Ambulatory Outpatients.

Assistance – If you need assistance, please see staff at the reception desk in the main foyer or volunteer hospital guides. Goulburn Base Hospital staff will also be available to assist.



At home with Ambulatory Outpatients

We recently caught up with staff working in the new Ambulatory Outpatients Unit to find out how they were enjoying their new spaces.

Dietician Kylie Langbein said the new Ambulatory Outpatients arrangements have resulted in many improvements to the way they see patients and schedule the clinic. She said it's nice to have quality consult spaces with more modern equipment.

Respiratory Nurse Practitioner Jane Cotter said she is happy with the new space. She was impressed with the large rooms and good storage.

Occupational Therapy Allied Health Assistant Jodie Keller said she particularly loves the new office and kitchen.

Clinical Nurse Specialist - Audiometry Di O'Connor was impressed with size of the new hearing booth and especially liked that there is a window in the booth allowing patients to see out of it.

Physiotherapy Manager Anne Brewster said the move was well-planned and timed, and the new arrangements are working well. She said the reception and administration team have been working well as a team and she's really enjoyed working with the new staff.



West Wing demolition

The demolition of the old office area/former private ward, known as the West Wing, was completed in September 2023 and the ground is now being levelled in preparation for the construction of the new patient carpark on Albert Street.

The new patient carpark will include parking for more than 75 vehicles, and will service patients for Oncology, Renal, Aboriginal Health, Pathology Collections and Ambulatory Outpatients.

The name of the new carpark is named after Albert Augustus Kerr, who was a founding member of the hospital.

Thanks to everyone for your patience and managing new access arrangements while we work to develop this area of the hospital campus.



New artwork celebrates rich Aboriginal culture of the Goulburn-Mulwaree region

A vibrant new artwork called 'Culture is Alive' has been unveiled as part of the Goulburn Hospital and Health Service Redevelopment.

Created by Muruwari and Ngemba woman and contemporary Aboriginal artist, Monica Bridge, the artwork is located in the main foyer and represents a topographical interpretation of the Goulburn-Mulwaree area including the mountains, hills, and rivers.

Culturally significant locations from across the region are reflected in the artwork including the Wollondilly and Mulwaree rivers, men's place at Rocky Hill, burial grounds near Lansdowne Estate, camp sites around Goulburn and along the river, the Corrobboree site at Goulburn railway station, artefacts found at Tall Timbers, and Wombeyan Caves outside the Goulburn area.

Read more about the artwork on the [Goulburn Hospital and Health Service website](#) or watch a [YouTube video with the artist](#). Check out some photos from the unveiling below.



MEMBERS OF THE GOULBURN HOSPITAL AND HEALTH SERVICE ARTS AND HERITAGE WORKING GROUP



MEMBERS OF THE GOULBURN BASE HOSPITAL ABORIGINAL COMMUNITY

Audiometry Booth

A new audiometry booth was recently installed in the Ambulatory Outpatients unit.

The new hearing booth is larger than the original booth and features a window allowing patients to see out of it.

The audiometry booth as well as new audiometry equipment was purchased with funds raised by the BDCU Goulburn Hospital Fundraising Inc.

Audiometry Nurse Di O'Connor said the new equipment and booth were great and thanked BDCU Goulburn Hospital Fundraising Inc for their support.



What's next for the Redevelopment?

Over coming weeks and months the Redevelopment work will focus on:

- Aboriginal Health refurbishment
- Oncology Unit refurbishment
- Sterile Supply Unit (SSU) for cleaning, sterilisation and storage of equipment and instruments
- Transitional Living Unit and Brain Injury Unit planning
- ANU Clinical Training Facility
- Albert Augustus Kerr Car Park, and landscaping

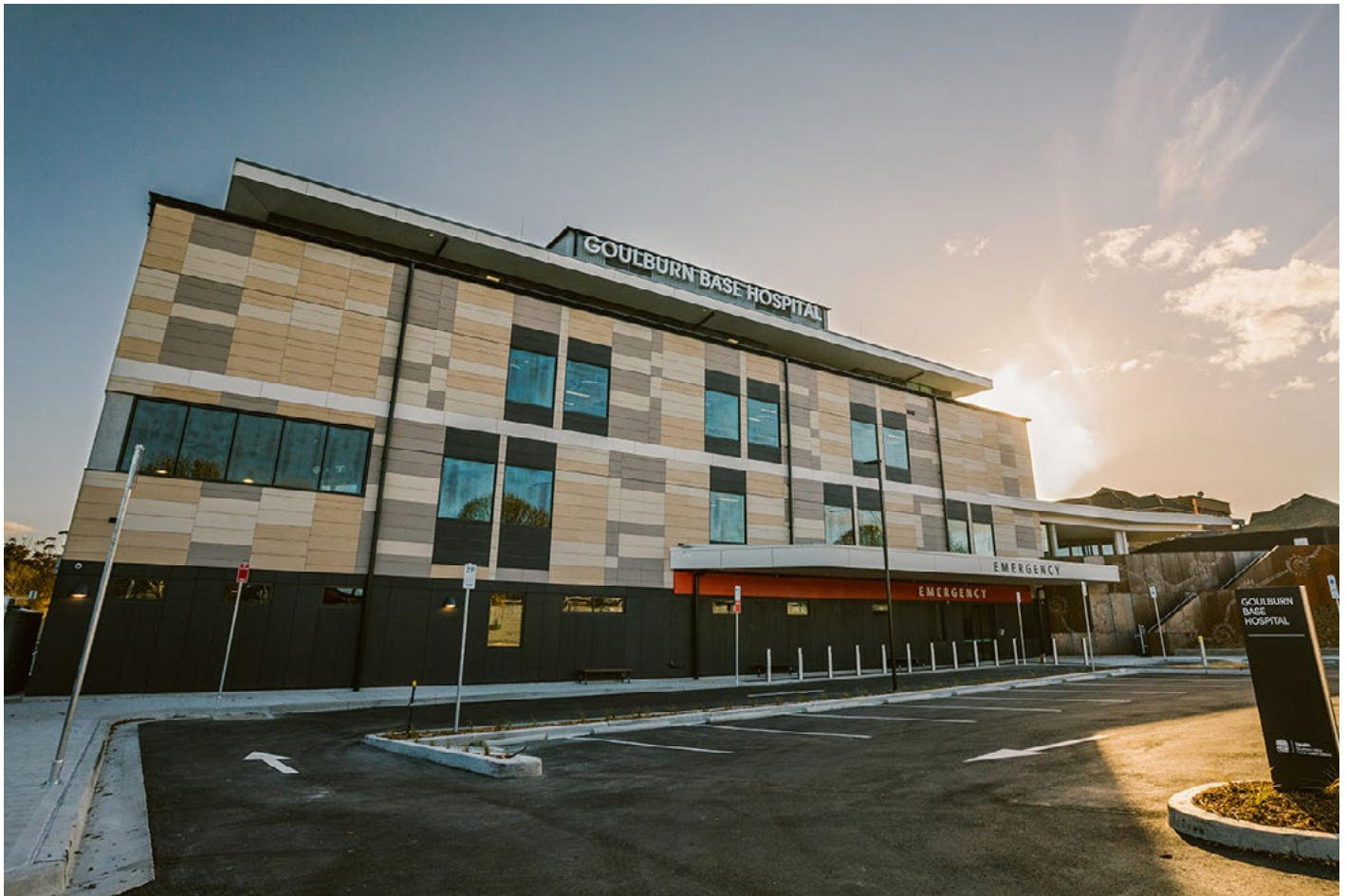


Thank you

We want to say thank you to the Goulburn community for your patience while we work to complete the redevelopment of Goulburn Base Hospital.

We appreciate your ongoing support and look forward to completing the redevelopment and delivering an outstanding regional hospital that will continue to deliver high-quality healthcare for the Goulburn region into the future.

If you have any questions or would like to provide feedback, please contact the project team. Our email is SNSWLHD-GoulburnHospital-Redevelopment@health.nsw.gov.au



Keep in touch with the Goulburn Hospital and Health Service Redevelopment

For more information visit the project website:
goulburnredevelopment.health.nsw.gov.au



SNSWLHD-GoulburnHospital-Redevelopment@health.nsw.gov.au



facebook.com/SNSWLHD



linkedin.com/company/health-infrastructure



twitter.com/NSWHealthInfra