

COMMUNITY NOTICE

Temporary traffic changes to pedestrian movement on Faithfull and Clifford Streets as part of Goulburn Hospital Redevelopment

\$150M GOULBURN HOSPITAL AND HEALTH SERVICE REDEVELOPMENT PROJECT

UPCOMING WORK

Hansen Yuncken will undertake trenching work along the footpath on Faithfull and Clifford Streets to support the installation of in ground services to provide power to the new four storey Clinical Services Building.

DATE OF WORK

The work will commence from **Monday 26 October 2020** and is expected to continue until late November 2020.

WHAT'S INVOLVED?

To minimise disruption to pedestrians and ensure emergency services and supply vehicles can access Goulburn Base Hospital the work will occur in small sections of around 20 metres. Each section will be completed prior to commencing work on the next section. *Please refer to Image 1: Works location and work section plan overleaf.*

The work will take place behind safety barriers and temporary fencing, and as the work progresses the barriers and temporary fences will be moved.

SAFETY IS OUR NUMBER ONE PRIORITY!

- For each section of work temporary pedestrian diversions will be in place, ensuring pedestrians can move safely around each work zone using the verge on both streets.
- Where needed, temporary foot plates will be used.
- Traffic control will also be in place at key access points.
- Community members are asked to take extra care, to use the temporary pedestrian diversions and to please follow all safety signage and directions. *Please refer Image 2. Pedestrian diversion work zone arrangement.*
- Take extra care and to look out for construction traffic.

WHAT TO EXPECT?

- There will be no impact to existing car parking on Faithfull and Clifford Streets as a result of the work.
- Every effort will be made to minimise disruption to our neighbours, however due to the nature of the work there will be changes to pedestrian access on Faithfull and Clifford Streets.

WORK HOURS

- On-site working hours are 7:00am to 6:00pm, Monday to Friday, and 8:00am to 1:00pm on Saturday. No work will take place outside of these hours or on public holidays without prior notice and approvals.

KEEPING YOU INFORMED

We are committed to being good neighbours and encourage you to contact us if you have any enquiries or concerns. We will:

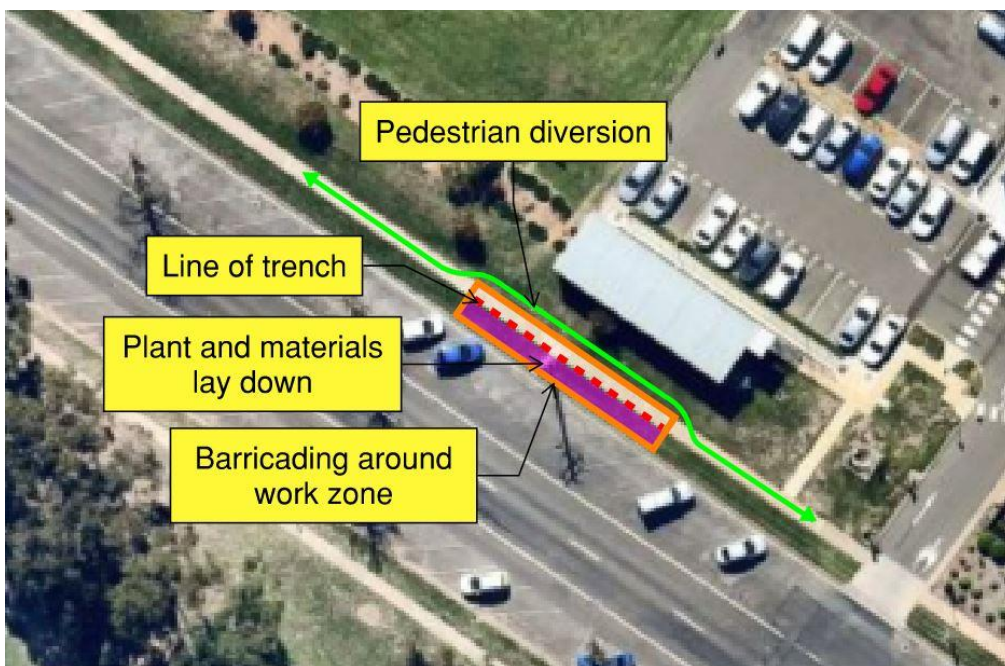
- Provide clear, relevant and timely information about construction activities;
- Provide prior notice if construction works are required outside of our general construction hours;
- Be accessible for you to ask questions, raise issues or find out more information.

HANSENYUNCKEN

Image 1: Works location and work section plan.



Image 2: Pedestrian diversion work zone arrangement.



KEEP IN TOUCH

Phone: 02 9770 7600

Email: sydney@hansenyuncken.com.au

Web: www.hansenyuncken.com.au

Project website: <http://www.goulburnredevelopment.health.nsw.gov.au>

All construction activities will be planned, controlled and documented as required under the State Significant Development Conditions of Consent for construction work.