



GOLDSMITH STREET AERIAL VIEW

Goulburn Hospital & Health Service Redevelopment

Project Number 10406.00

Scale @ A1 Sheet Size 1 : 1

Date 13/09/2019

Drawing Number: AA-00-00



GOLDSMITH STREET MAIN ENTRANCE

Goulburn Hospital & Health Service Redevelopment

Project Number 10406.00

Scale @ A1 Sheet Size

Date 13/09/2019

Drawing Number: AA-00-01



EMERGENCY DEPARTMENT ENTRY AND DROP OFF

Goulburn Hospital & Health Service Redevelopment

Project Number 10406.00

Scale @ A1 Sheet Size

Date 13/09/2019

Drawing Number: AA-00-02



FAITHFUL STREET FLEET CAR PARK

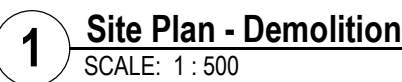
Goulburn Hospital & Health Service Redevelopment

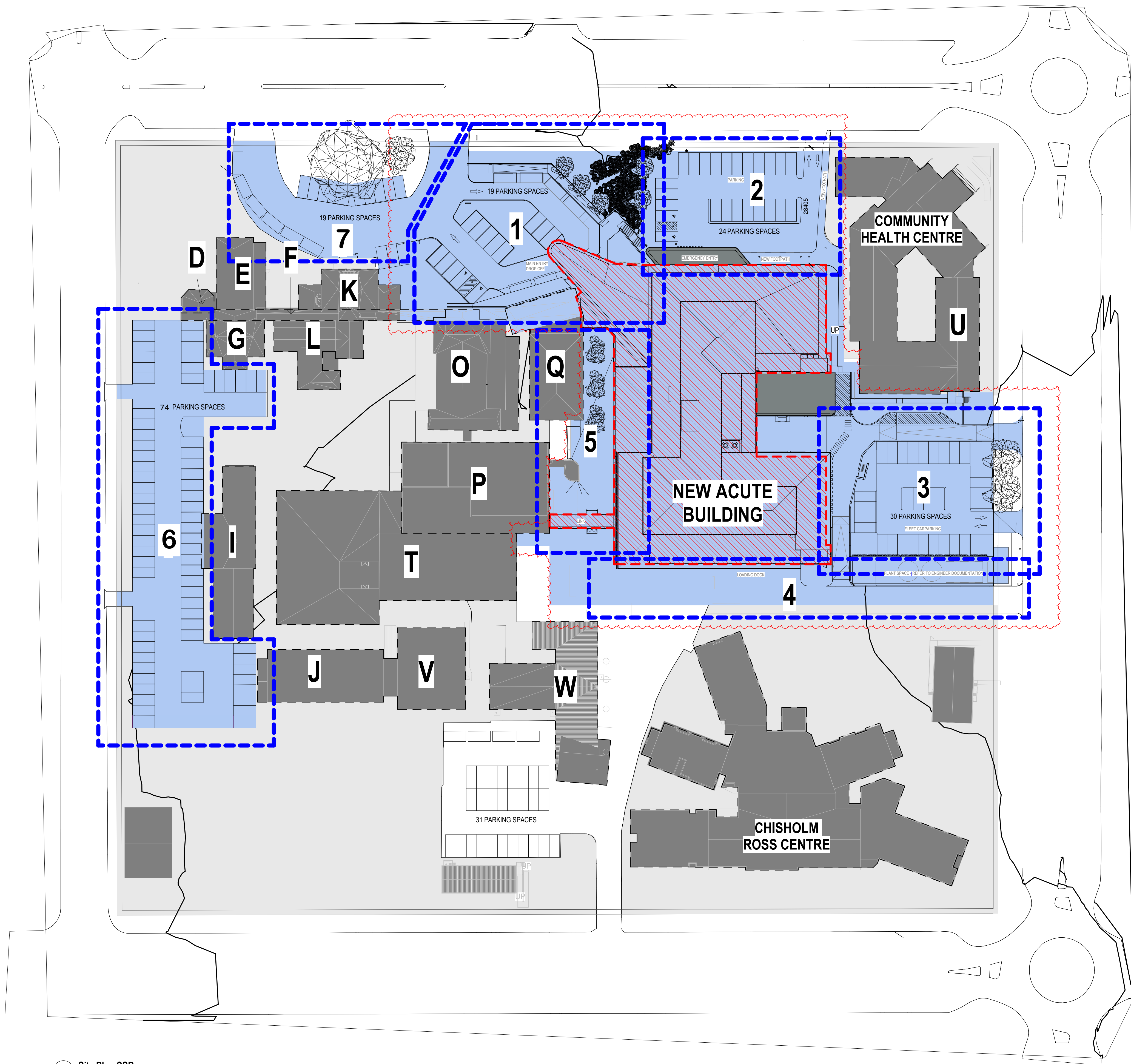
Project Number 10406.00

Scale @ A1 Sheet Size

Date 13/09/2019

Drawing Number: AA-00-03





1 Site Plan-SSD
SCALE: 1:500

EXISTING BUILDING LEGEND:

BLDG	LEVEL	DEPARTMENT
A	GR	WEST WING / OFFICES / CLINICAL LIBRARY
B	GR	MATERNITY ENTRANCE
C	GR	MATERNITY
D	GR	CRITICAL CARE OFFICES
E	GR	EYE CLINIC
F	GR	LINK / CORRIDOR
G	GR	CRITICAL CARE OFFICES
H	GR L1 L2	CHILDREN'S WARD & DAY ONLY UNIT SURGICAL WARD MEDICAL WARD
I	GR	EDUCATION
J	GR	RENAL DIALYSIS
K	GR	MEDICAL IMAGING
L	GR	MEDICAL IMAGING
M	GR L1 L2	MEDICAL IMAGING 5 BED WARD MEDICAL WARD
O	GR L1	EMERGENCY / PHARMACY INTENSIVE CARE UNIT
P	LG GR L1	KITCHEN OPERATING THEATRES CSSD
Q	LG GR	MORTUARY PATHOLOGY
T	LG GR	BACK OF HOUSE REHABILITATION UNIT
U	GR	COMMUNITY HEALTH CENTRE
V	GR	REHABILITATION
W	GR	BIO-MED

SCOPE OF SITE WORKS

- 1 MAIN ENTRY DROP-OFF + PARKING.
REFER TO ARCHITECTURAL DRAWING AR-10-002.
- 2 EMERGENCY DROP-OFF + PARKING.
REFER TO ARCHITECTURAL DRAWING AR-10-002.
- 3 STAFF / FLEET CARPARK.
AMBULANCE ROAD / ACCESS / PLAZA.
REFER TO ARCHITECTURAL DRAWING AR-10-003.
- 4 SERVICE ROAD / LOADING DOCK.
REFER TO ARCHITECTURAL DRAWING AR-10-003.
- 5 WEST COURTYARD / LINK CORRIDOR.
REFER TO ARCHITECTURAL DRAWING AR-10-003.

6&7 CARPARKING.
TO BE CAPTURED AS FINAL WORKS (SEPARATE WORKS FROM THE NEW ACUTE BUILDING WORKS).

SITE WIDE PARK SPACE NUMBERS

PREVIOUS APPROVED SCHEME	CURRENT SCHEME
MAIN ENTRY PARKING SPACES 21	MAIN ENTRY PARKING SPACES 19
EMERGENCY PARKING SPACES 22	EMERGENCY PARKING SPACES 24
FLEET PARKING SPACES 30	FLEET PARKING SPACES 30
SOUTHERN PARKING SPACES 31	SOUTHERN PARKING SPACES 31
WESTERN PARKING SPACES 72	WESTERN PARKING SPACES 74
NORTHERN PARKING SPACES 20	NORTHERN PARKING SPACES 19
TOTAL PARKING SPACES = 196	TOTAL PARKING SPACES = 197

KEY PLAN

COPYRIGHT

ALL RIGHTS RESERVED. THIS WORK IS COPYRIGHT AND CANNOT BE REPRODUCED OR COPIED IN ANY FORM OR BY ANY MEANS (GRAPHIC, ELECTRONIC OR MECHANICAL, INCLUDING PHOTOCOPYING) WITHOUT THE WRITTEN PERMISSION OF THE PRINCIPAL UNDER THE TERMS OF THE CONTRACT. ANY LICENCE, EXPRESS OR IMPLIED, TO USE THE DOCUMENT FOR ANY PURPOSE WHATSOEVER IS RESTRICTED TO THE TERMS OF THE AGREEMENT OR IMPLIED AGREEMENT WITH THE PRINCIPAL UNDER THE TERMS OF THE CONTRACT.

DIMENSIONS

USE FIGURED DIMENSIONS. DO NOT SCALE. CONTRACTORS MUST VERIFY ALL DIMENSIONS ON THE SITE BEFORE COMMENCING ANY WORK OR MAKING ANY SHOP DRAWING WHICH MUST BE SUBMITTED AND REVIEWED BEFORE MANUFACTURE.

FIXTURES, FITTINGS & EQUIPMENT SPECIFICATIONS

SUBSTITUTE FF&E EQUIPMENT SPECIFICATIONS
THE FIT-OUT DESIGN AND DOCUMENTATION HAS BEEN COMPLETED ON THE BASIS OF FF&E AND EQUIPMENT ADVISED TO THIS OFFICE AT THE TIME OF BRIEFING THE DESIGN. THE DESIGN PROVISIONS FOR FF&E AND EQUIPMENT INCORPORATES SPATIAL ALLOCATIONS, SERVICES, LOADING AND ACCESS CLEARANCES AND WHERE APPROPRIATE SERVICES REQUIREMENTS, HAVING DUE REGARD FOR SURROUNDING FIXTURES AND FITTINGS. IT SHOULD BE NOTED THAT SUBSTITUTE FF&E OR EQUIPMENT WITH ALTERNATE SPECIFICATIONS SHOULD NOT BE PROCURED PRIOR TO VALIDATING THOSE SPECIFICATIONS AGAINST THE ITEM CONTROL SCHEDULE AND DESIGN PROVISIONS IN THE MODEL. THIS OFFICE ACCEPTS NO RESPONSIBILITY FOR THE PROCUREMENT OF SUBSTITUTE FF&E AND EQUIPMENT WHICH HAS NOT BEEN REVIEWED AND VALIDATED AGAINST THE ORIGINAL DESIGN PROVISIONS.

SERVICE POINTS DISCLAIMER

THE SERVICE POINTS IDENTIFIED ON THESE DRAWINGS HAVE BEEN OVERLAYED FROM THE BUILDING SERVICES ENGINEERING MODEL, AND ARE PROVIDED FOR INFORMATION AND SET-OUT PURPOSES ONLY. WE HAVE BEEN ADVISED BY THE SERVICES ENGINEERS THAT THE POINTS REPRESENTED ON THESE DRAWINGS ARE CORRECT AT THE TIME OF PUBLICATION. THIS OFFICE DOES NOT WARRANT THE ACCURACY OF THIS DATA. REFER TO THE BUILDING SERVICES ENGINEERING DOCUMENTATION FOR THE INSTALLATION OF THE SERVICE POINTS, AND THE INTERFACE BETWEEN THE SERVICE POINTS AND THE RESPECTIVE ENGINEERING SYSTEMS.

ISSUED FOR INFORMATION

ARCHITECTS



ABN: 21 134 476 065
PELACCO COMPLEX, BUILDING 5, LEVEL 2
21-31 GOOD WOOD ST, RICHMOND VIC 3121, AUSTRALIA
PH: (03) 9885 2333 FAX: (03) 9885 2455

THIS ARCHITECTURAL DESIGN IS THE COPYRIGHT OF
SILVER THOMAS HANLEY (AUS) PTY LTD ABN 21 134 476 065
AND SHALL NOT BE REPRODUCED WITHOUT THEIR WRITTEN PERMISSION
CLIENT



Health
Infrastructure

PROJECT MANAGER



Level 15, 207 Kent Street,
Sydney NSW 2000
PH: (02) 9276 1400

PROJECT

Goulburn Hospital & Health Service Redevelopment

130 Goldsmith St, Goulburn NSW 2580

DRAWING TITLE

SITE PLAN - PROPOSED MAIN WORKS - \$4.55 MODIFICATION APPLICATION

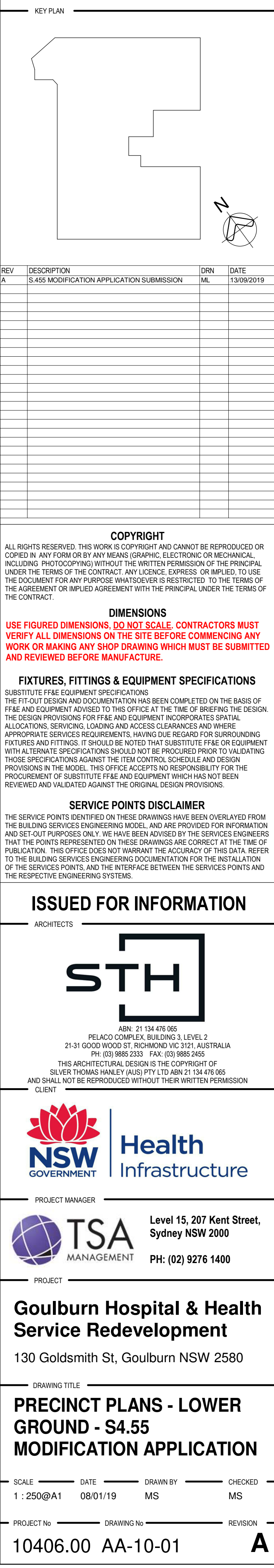
SCALE: DATE: 08/01/19 DRAWN BY: MS CHECKED: MS
As indicated@A1

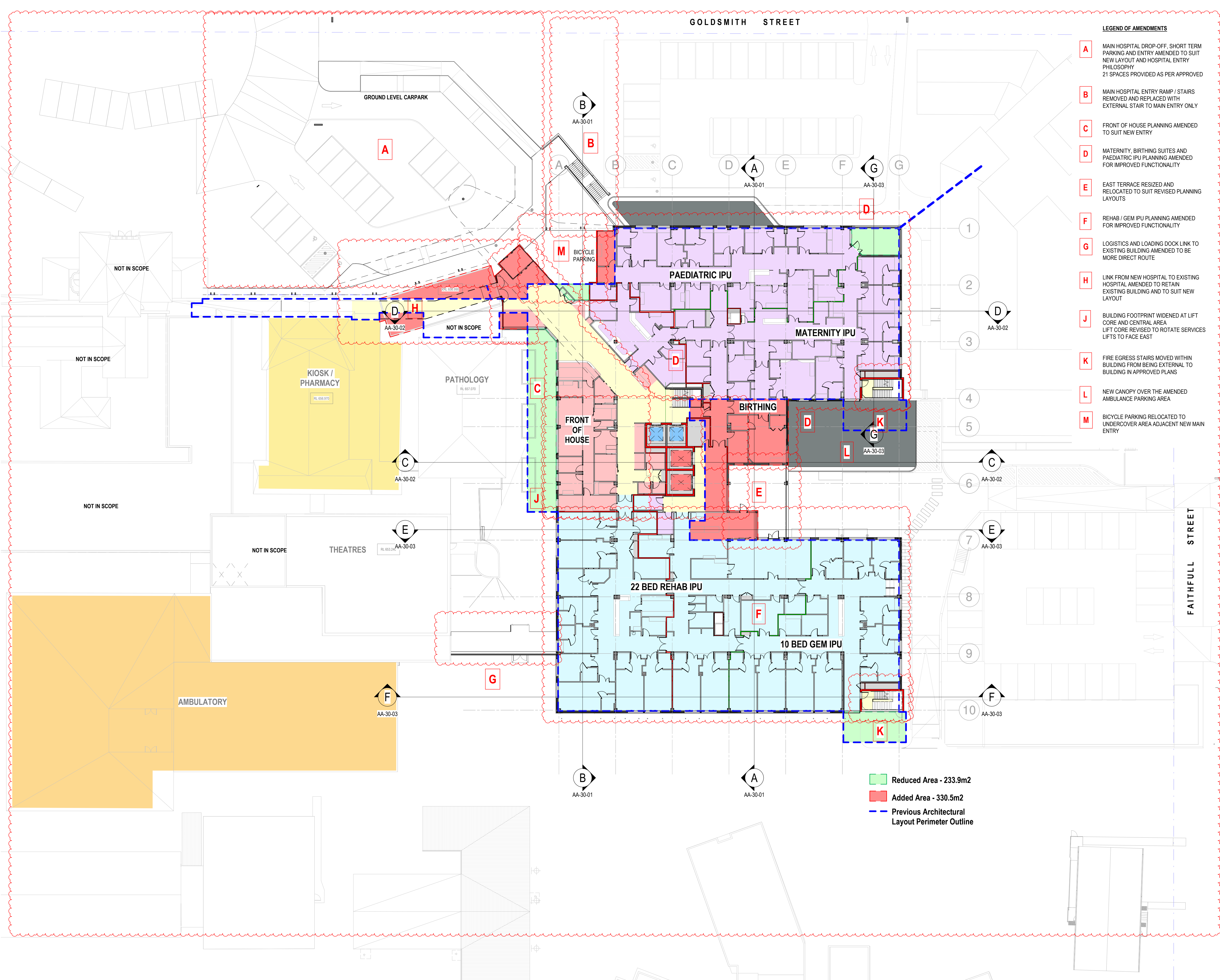
PROJECT No: DRAWING No: REVISION:

10406.00 AA-02-02

A

A	EMERGENCY DEPARTMENT CARPARK & DROP-OFF AREA AMENDED TO SUIT NEW LAYOUT AND HOSPITAL ENTRY 24 SPACES PROVIDED IN LIEU OF APPROVED 19 SPACES
B	MAIN HOSPITAL ENTRY RAMP / STAIRS REMOVED AND REPLACED WITH EXTERNAL STAIR TO MAIN ENTRY ONLY
C	PATIENT FLOW & TECS DEPARTMENTS RELOCATED
D	AMBULANCE ENTRY, ACCESS AND PARKING LAYOUT AMENDED
E	HOSPITAL SERVICES PLANT RELOCATED FROM EASTERN SIDE TO SOUTHERN SIDE
F	MORTUARY AND HEARSE PARKING BAY ADDED TO FACILITY
G	LOGISTICS AND LOADING DOCK LINK TO EXISTING BUILDING AMENDED TO BE MORE DIRECT ROUTE
H	EMERGENCY DEPARTMENT PLANNING AMENDED FOR IMPROVED FUNCTIONALITY
J	MEDICAL IMAGING PLANNING AMENDED FOR IMPROVED FUNCTIONALITY
K	STAFF FLEET CARPARK LAYOUT AND ACCESS AMENDED 32 SPACES PROVIDED IN LIEU OF APPROVED 29 SPACES EXTERNAL SERVICES PLANT AMENDED TO SUIT AS-BUILT CONDITIONS
L	FIRE EGRESS STAIRS MOVED WITHIN BUILDING FROM BEING EXTERNAL TO BUILDING IN APPROVED PLANS
M	BUILDING FOOTPRINT WIDENED AT LIFT CORE AND CENTRAL AREA LIFT CORE REVISED TO ROTATE SERVICES LIFTS TO FACE EAST
N	LANDSCAPED COURTYARD TO WEST SIDE OF NEW BUILDING BETWEEN EXISTING BUILDINGS FOR STAFF ACCESS ONLY





LEGEND OF AMENDMENTS

- A** MAIN HOSPITAL DROP-OFF, SHORT TERM PARKING AND ENTRY AMENDED TO SUIT NEW LAYOUT AND HOSPITAL ENTRY PHILOSOPHY
21 SPACES PROVIDED AS PER APPROVED
- B** MAIN HOSPITAL ENTRY RAMP / STAIRS REMOVED AND REPLACED WITH EXTERNAL STAIR TO MAIN ENTRY ONLY
- C** FRONT OF HOUSE PLANNING AMENDED TO SUIT NEW ENTRY
- D** MATERNITY, BIRTHING SUITES AND PAEDIATRIC IPU PLANNING AMENDED FOR IMPROVED FUNCTIONALITY
- E** EAST TERRACE RESIZED AND RELOCATED TO SUIT REVISED PLANNING LAYOUTS
- F** REHAB / GEM IPU PLANNING AMENDED FOR IMPROVED FUNCTIONALITY
- G** LOGISTICS AND LOADING DOCK LINK TO EXISTING BUILDING AMENDED TO BE MORE DIRECT ROUTE
- H** LINK FROM NEW HOSPITAL TO EXISTING HOSPITAL AMENDED TO RETAIN EXISTING BUILDING AND TO SUIT NEW LAYOUT
- J** BUILDING FOOTPRINT WIDENED AT LIFT CORE AND CENTRAL AREA
LIFT CORE REVISED TO ROTATE SERVICES LIFTS TO FACE EAST
- K** FIRE EGRESS STAIRS MOVED WITHIN BUILDING FROM BEING EXTERNAL TO BUILDING IN APPROVED PLANS
- L** NEW CANOPY OVER THE AMENDED AMBULANCE PARKING AREA
- M** BICYCLE PARKING RELOCATED TO UNDERCOVER AREA ADJACENT NEW MAIN ENTRY

KEY PLAN

REV	DESCRIPTION	DRN	DATE
A	S.455 MODIFICATION APPLICATION SUBMISSION	ML	13/09/2019

COPYRIGHT
ALL RIGHTS RESERVED. THIS WORK IS COPYRIGHT AND CANNOT BE REPRODUCED OR COPIED IN ANY FORM OR BY ANY MEANS (GRAPHIC, ELECTRONIC OR MECHANICAL, INCLUDING PHOTOCOPYING) WITHOUT THE WRITTEN PERMISSION OF THE PRINCIPAL UNDER THE TERMS OF THE CONTRACT. ANY LICENCE, EXPRESS OR IMPLIED, TO USE THE DOCUMENT FOR ANY PURPOSE WHATSOEVER IS RESTRICTED TO THE TERMS OF THE AGREEMENT OR IMPLIED AGREEMENT WITH THE PRINCIPAL UNDER THE TERMS OF THE CONTRACT.

DIMENSIONS
USE FIGURED DIMENSIONS. DO NOT SCALE. CONTRACTORS MUST VERIFY ALL DIMENSIONS ON THE SITE BEFORE COMMENCING ANY WORK OR MAKING ANY SHOP DRAWING WHICH MUST BE SUBMITTED AND REVIEWED BEFORE MANUFACTURE.

FIXTURES, FITTINGS & EQUIPMENT SPECIFICATIONS
SUBSTITUTE FF&E EQUIPMENT SPECIFICATIONS
THE FIT-OUT DESIGN AND DOCUMENTATION HAS BEEN COMPLETED ON THE BASIS OF FF&E AND EQUIPMENT ADVISED TO THIS OFFICE AT THE TIME OF BRIEFING THE DESIGN. THE DESIGN PROVISIONS FOR FF&E AND EQUIPMENT INCORPORATES SPATIAL ALLOCATIONS, SERVICING, LOADING AND ACCESS CLEARANCES AND WHERE APPROPRIATE SERVICES REQUIREMENTS, HAVING DUE REGARD FOR SURROUNDING FIXTURES AND FITTINGS. IT SHOULD BE NOTED THAT SUBSTITUTE FF&E OR EQUIPMENT WITH ALTERNATE SPECIFICATIONS SHOULD NOT BE PROCURED PRIOR TO VALIDATING THOSE SPECIFICATIONS AGAINST THE ITEM CONTROL SCHEDULE AND DESIGN PROVISIONS IN THE MODEL. THIS OFFICE ACCEPTS NO RESPONSIBILITY FOR THE PROCUREMENT OF SUBSTITUTE FF&E AND EQUIPMENT WHICH HAS NOT BEEN REVIEWED AND VALIDATED AGAINST THE ORIGINAL DESIGN PROVISIONS.

SERVICE POINTS DISCLAIMER
THE SERVICE POINTS IDENTIFIED ON THESE DRAWINGS HAVE BEEN OVERLAYED FROM THE BUILDING SERVICES ENGINEERING MODEL, AND ARE PROVIDED FOR INFORMATION AND SET-OUT PURPOSES ONLY. WE HAVE BEEN ADVISED BY THE SERVICES ENGINEERS THAT THE POINTS REPRESENTED ON THESE DRAWINGS ARE CORRECT AT THE TIME OF PUBLICATION. THIS OFFICE DOES NOT WARRANT THE ACCURACY OF THIS DATA. REFER TO THE BUILDING SERVICES ENGINEERING DOCUMENTATION FOR THE INSTALLATION OF THE SERVICES POINTS, AND THE INTERFACE BETWEEN THE SERVICES POINTS AND THE RESPECTIVE ENGINEERING SYSTEMS.

ARCHITECTS

ABN: 21 134 476 065
21-31 GOOD WOOD ST, RICHMOND VIC 3121, AUSTRALIA
PH: (03) 9885 2333 FAX: (03) 9885 2455
THIS ARCHITECTURAL DESIGN IS THE COPYRIGHT OF SILVER THOMAS HANLEY (AUS) PTY LTD ABN 21 134 476 065 AND SHALL NOT BE REPRODUCED WITHOUT THEIR WRITTEN PERMISSION
CLIENT

PROJECT MANAGER

Level 15, 207 Kent Street,
Sydney NSW 2000
PH: (02) 9276 1400

PROJECT

Goulburn Hospital & Health Service Redevelopment
130 Goldsmith St, Goulburn NSW 2580

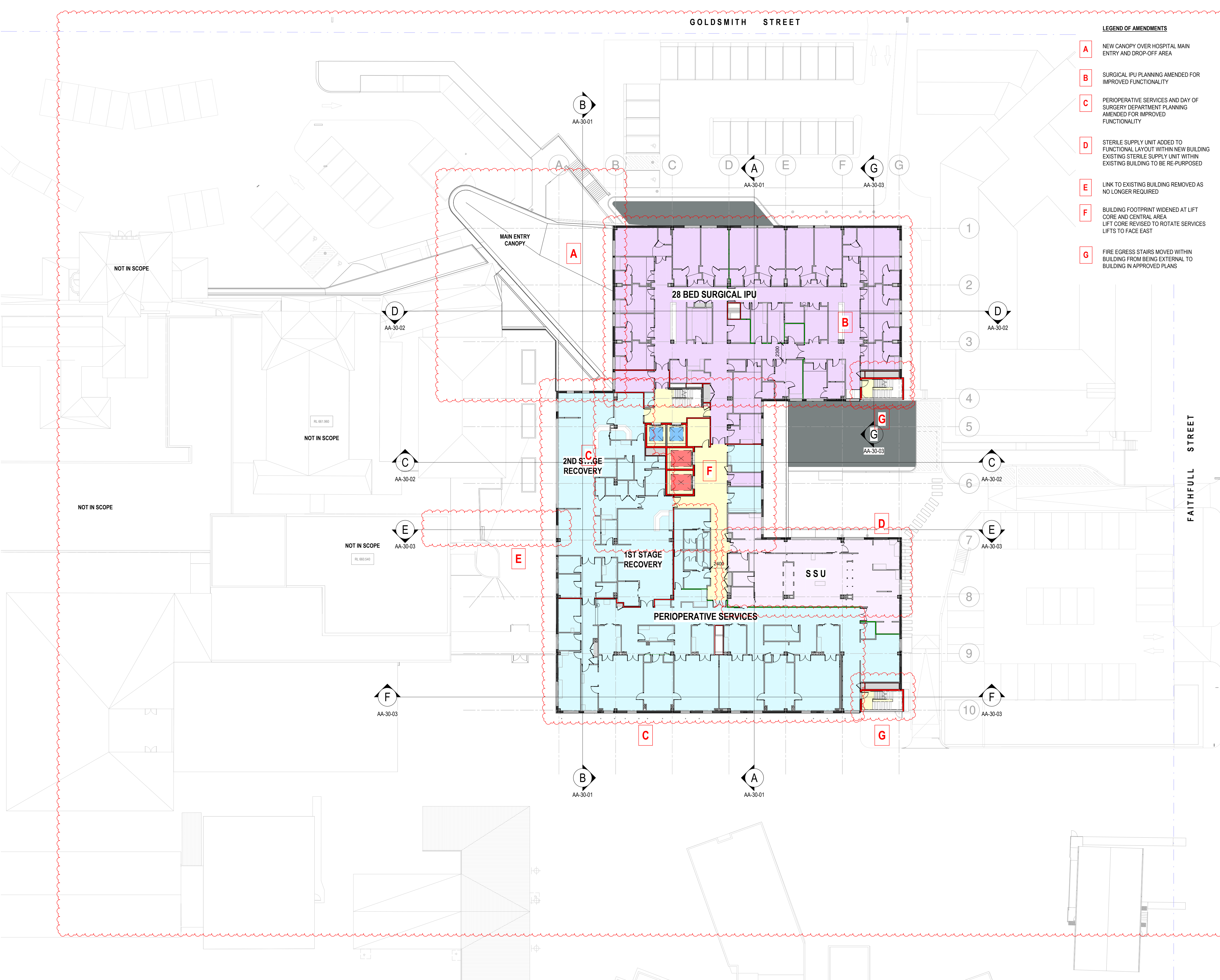
DRAWING TITLE

PRECINCT PLANS - GROUND FLOOR - S4.55 MODIFICATION APPLICATION

SCALE	DATE	DRAWN BY	CHECKED
1 : 250@A1	08/01/19	MS	MS

PROJECT No	DRAWING No	REVISION
10406.00	AA-10-02	A

BM 320 - Goulburn Hospital/CH - BUILDING - A10-02



- LEGEND OF AMENDMENTS**
- A** NEW CANOPY OVER HOSPITAL MAIN ENTRY AND DROP-OFF AREA
 - B** SURGICAL IPU PLANNING AMENDED FOR IMPROVED FUNCTIONALITY
 - C** PERIOPERATIVE SERVICES AND DAY OF SURGERY DEPARTMENT PLANNING AMENDED FOR IMPROVED FUNCTIONALITY
 - D** STERILE SUPPLY UNIT ADDED TO FUNCTIONAL LAYOUT WITHIN NEW BUILDING EXISTING STERILE SUPPLY UNIT WITHIN EXISTING BUILDING TO BE RE-PURPOSED
 - E** LINK TO EXISTING BUILDING REMOVED AS NO LONGER REQUIRED
 - F** BUILDING FOOTPRINT WIDENED AT LIFT CORE AND CENTRAL AREA LIFT CORE REVISED TO ROTATE SERVICES LIFTS TO FACE EAST
 - G** FIRE EGRESS STAIRS MOVED WITHIN BUILDING FROM BEING EXTERNAL TO BUILDING IN APPROVED PLANS

KEY PLAN

COPYRIGHT
ALL RIGHTS RESERVED. THIS WORK IS COPYRIGHT AND CANNOT BE REPRODUCED OR COPIED IN ANY FORM OR BY ANY MEANS (GRAPHIC, ELECTRONIC OR MECHANICAL, INCLUDING PHOTOCOPYING) WITHOUT THE WRITTEN PERMISSION OF THE PRINCIPAL UNDER THE TERMS OF THE CONTRACT. ANY LICENCE, EXPRESS OR IMPLIED, TO USE THE DOCUMENT FOR ANY PURPOSE WHATSOEVER IS RESTRICTED TO THE TERMS OF THE AGREEMENT OR IMPLIED AGREEMENT WITH THE PRINCIPAL UNDER THE TERMS OF THE CONTRACT.

DIMENSIONS
USE FIGURED DIMENSIONS. DO NOT SCALE. CONTRACTORS MUST VERIFY ALL DIMENSIONS ON THE SITE BEFORE COMMENCING ANY WORK OR MAKING ANY SHOP DRAWING WHICH MUST BE SUBMITTED AND REVIEWED BEFORE MANUFACTURE.

FIXTURES, FITTINGS & EQUIPMENT SPECIFICATIONS
SUBSTITUTE FF&E EQUIPMENT SPECIFICATIONS
THE FIT-OUT DESIGN AND DOCUMENTATION HAS BEEN COMPLETED ON THE BASIS OF FF&E AND EQUIPMENT ADVISED TO THIS OFFICE AT THE TIME OF BRIEFING THE DESIGN. THE DESIGN PROVISIONS FOR FF&E AND EQUIPMENT INCORPORATES SPATIAL ALLOCATIONS, SERVICES, LOADING AND ACCESS CLEARANCES AND WHERE APPROPRIATE SERVICES REQUIREMENTS, HAVING DUE REGARD FOR SURROUNDING FIXTURES AND FITTINGS. IT SHOULD BE NOTED THAT SUBSTITUTE FF&E OR EQUIPMENT WITH ALTERNATE SPECIFICATIONS SHOULD NOT BE PROCURED PRIOR TO VALIDATING THOSE SPECIFICATIONS AGAINST THE ITEM CONTROL SCHEDULE AND DESIGN PROVISIONS IN THE MODEL. THIS OFFICE ACCEPTS NO RESPONSIBILITY FOR THE PROCUREMENT OF SUBSTITUTE FF&E AND EQUIPMENT WHICH HAS NOT BEEN REVIEWED AND VALIDATED AGAINST THE ORIGINAL DESIGN PROVISIONS.

SERVICE POINTS DISCLAIMER
THE SERVICE POINTS IDENTIFIED ON THESE DRAWINGS HAVE BEEN OVERLAYED FROM THE BUILDING SERVICES ENGINEERING MODEL AND ARE PROVIDED FOR INFORMATION AND SET-OUT PURPOSES ONLY. WE HAVE BEEN ADVISED BY THE SERVICES ENGINEERS THAT THE POINTS REPRESENTED ON THESE DRAWINGS ARE CORRECT AT THE TIME OF PUBLICATION. THIS OFFICE DOES NOT WARRANT THE ACCURACY OF THIS DATA. REFER TO THE BUILDING SERVICES ENGINEERING DOCUMENTATION FOR THE INSTALLATION OF THE SERVICE POINTS, AND THE INTERFACE BETWEEN THE SERVICE POINTS AND THE RESPECTIVE ENGINEERING SYSTEMS.

ISSUED FOR INFORMATION

ARCHITECTS

STH

ABN: 21 134 476 065
PELADO COMPLEX, BUILDING 3 LEVEL 2
21-31 GOOD WOOD ST, RICHMOND VIC 3121, AUSTRALIA
PH: (03) 9885 2333 FAX: (03) 9885 2455
THIS ARCHITECTURAL DESIGN IS THE COPYRIGHT OF
SILVER THOMAS HANLEY (AUS) PTY LTD ABN 21 134 476 065
AND SHALL NOT BE REPRODUCED WITHOUT THEIR WRITTEN PERMISSION
CLIENT

PROJECT MANAGER

TSA
MANAGEMENT

Level 15, 207 Kent Street,
Sydney NSW 2000
PH: (02) 9276 1400

PROJECT

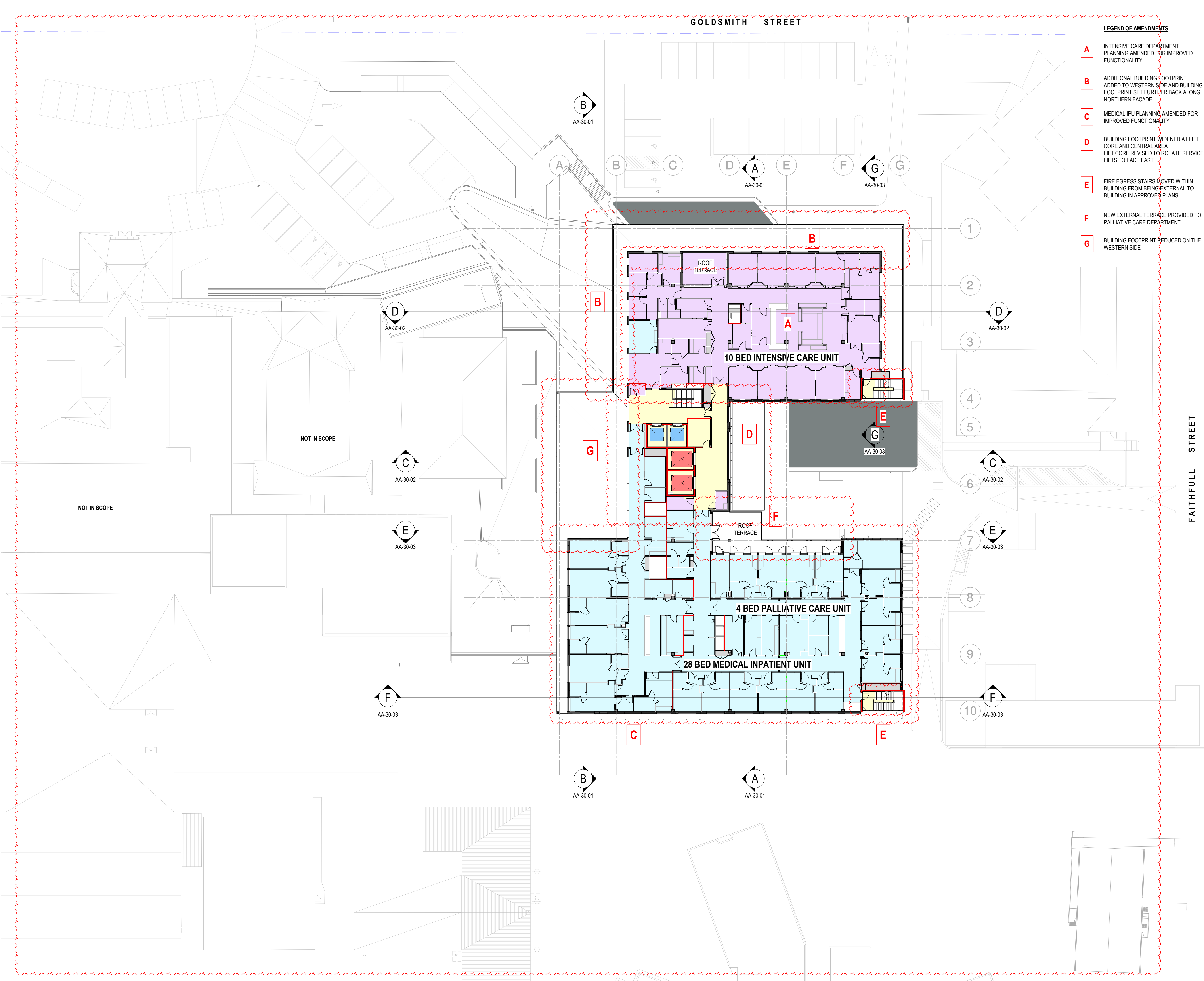
Goulburn Hospital & Health Service Redevelopment
130 Goldsmith St, Goulburn NSW 2580

DRAWING TITLE

PRECINCT PLANS - LEVEL 01 - S4.55 MODIFICATION APPLICATION

SCALE 1:250@A1 **DATE** 08/01/19 **DRAWN BY** MS **CHECKED** MS

PROJECT No 10406.00 **DRAWING No** AA-10-03 **REVISION** A



- LEGEND OF AMENDMENTS**
- A** INTENSIVE CARE DEPARTMENT PLANNING AMENDED FOR IMPROVED FUNCTIONALITY
 - B** ADDITIONAL BUILDING FOOTPRINT ADDED TO WESTERN SIDE AND BUILDING FOOTPRINT SET FURTHER BACK ALONG NORTHERN FACADE
 - C** MEDICAL IPU PLANNING AMENDED FOR IMPROVED FUNCTIONALITY
 - D** BUILDING FOOTPRINT WIDENED AT LIFT CORE AND CENTRAL AREA LIFT CORE REVISED TO ROTATE SERVICES LIFTS TO FACE EAST
 - E** FIRE EGRESS STAIRS MOVED WITHIN BUILDING FROM BEING EXTERNAL TO BUILDING IN APPROVED PLANS
 - F** NEW EXTERNAL TERRACE PROVIDED TO PALLIATIVE CARE DEPARTMENT
 - G** BUILDING FOOTPRINT REDUCED ON THE WESTERN SIDE

KEY PLAN

REV DESCRIPTION DRN DATE
A 5.455 MODIFICATION APPLICATION SUBMISSION ML 13/09/2019

COPYRIGHT
ALL RIGHTS RESERVED. THIS WORK IS COPYRIGHT AND CANNOT BE REPRODUCED OR COPIED IN ANY FORM OR BY ANY MEANS (GRAPHIC, ELECTRONIC OR MECHANICAL, INCLUDING PHOTOCOPYING) WITHOUT THE WRITTEN PERMISSION OF THE PRINCIPAL UNDER THE TERMS OF THE CONTRACT. ANY LICENCE, EXPRESS OR IMPLIED, TO USE THE DOCUMENT FOR ANY PURPOSE WHATSOEVER IS RESTRICTED TO THE TERMS OF THE AGREEMENT OR IMPLIED AGREEMENT WITH THE PRINCIPAL UNDER THE TERMS OF THE CONTRACT.

DIMENSIONS
USE FIGURED DIMENSIONS. DO NOT SCALE. CONTRACTORS MUST VERIFY ALL DIMENSIONS ON THE SITE BEFORE COMMENCING ANY WORK OR MAKING ANY SHOP DRAWING WHICH MUST BE SUBMITTED AND REVIEWED BEFORE MANUFACTURE.

FIXTURES, FITTINGS & EQUIPMENT SPECIFICATIONS
SUBSTITUTE FF&E EQUIPMENT SPECIFICATIONS
THE FIT-OUT DESIGN AND DOCUMENTATION HAS BEEN COMPLETED ON THE BASIS OF FF&E AND EQUIPMENT ADVISED TO THIS OFFICE AT THE TIME OF BRIEFING THE DESIGN. THE DESIGN PROVISIONS FOR FF&E AND EQUIPMENT INCORPORATES SPATIAL ALLOCATIONS, SERVICES, LOADING AND ACCESS CLEARANCES AND WHERE APPROPRIATE SERVICES REQUIREMENTS, HAVING DUE REGARD FOR SURROUNDING FIXTURES AND FITTINGS. IT SHOULD BE NOTED THAT SUBSTITUTE FF&E OR EQUIPMENT WITH ALTERNATE SPECIFICATIONS SHOULD NOT BE PROCURED PRIOR TO VALIDATING THOSE SPECIFICATIONS AGAINST THE ITEM CONTROL SCHEDULE AND DESIGN PROVISIONS IN THE MODEL. THIS OFFICE ACCEPTS NO RESPONSIBILITY FOR THE PROCUREMENT OF SUBSTITUTE FF&E AND EQUIPMENT WHICH HAS NOT BEEN REVIEWED AND VALIDATED AGAINST THE ORIGINAL DESIGN PROVISIONS.

SERVICE POINTS DISCLAIMER
THE SERVICE POINTS IDENTIFIED ON THESE DRAWINGS HAVE BEEN OVERLAYED FROM THE BUILDING SERVICES ENGINEERING MODEL, AND ARE PROVIDED FOR INFORMATION AND SET-OUT PURPOSES ONLY. WE HAVE BEEN ADVISED BY THE SERVICES ENGINEERS THAT THE POINTS REPRESENTED ON THESE DRAWINGS ARE CORRECT AT THE TIME OF PUBLICATION. THIS OFFICE DOES NOT WARRANT THE ACCURACY OF THIS DATA. REFER TO THE BUILDING SERVICES ENGINEERING DOCUMENTATION FOR THE INSTALLATION OF THE SERVICES POINTS, AND THE INTERFACE BETWEEN THE SERVICES POINTS AND THE RESPECTIVE ENGINEERING SYSTEMS.

ISSUED FOR INFORMATION

ARCHITECTS

ABN: 21 134 476 065
PELACO COMPLEX, BUILDING 3, LEVEL 2
21-31 GOOD WOOD ST, RICHMOND VIC 3121, AUSTRALIA
PH: (03) 9885 2333 FAX: (03) 9885 2455
THIS ARCHITECTURAL DESIGN IS THE COPYRIGHT OF
SILVER THOMAS HANLEY (AUS) PTY LTD ABN 21 134 476 065
AND SHALL NOT BE REPRODUCED WITHOUT THEIR WRITTEN PERMISSION
CLIENT

PROJECT MANAGER

Level 15, 207 Kent Street,
Sydney NSW 2000
PH: (02) 9276 1400

PROJECT

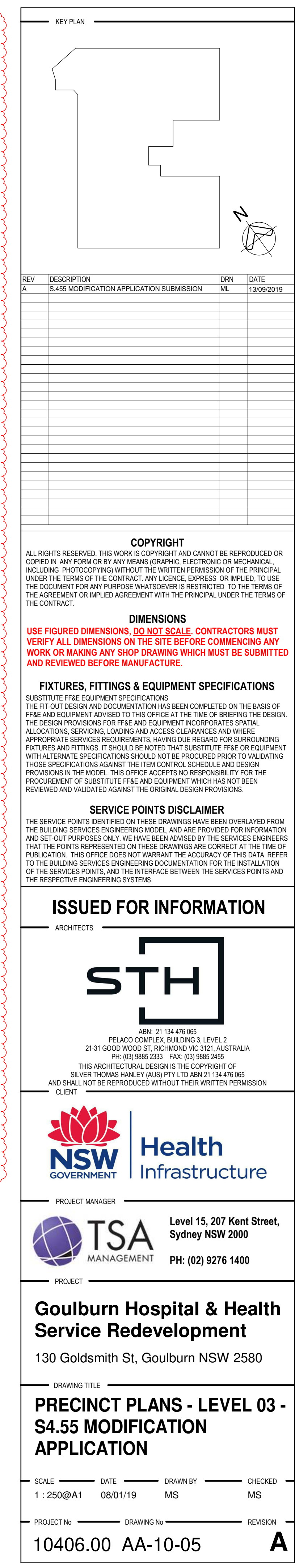
**Goulburn Hospital & Health
Service Redevelopment**
130 Goldsmith St, Goulburn NSW 2580

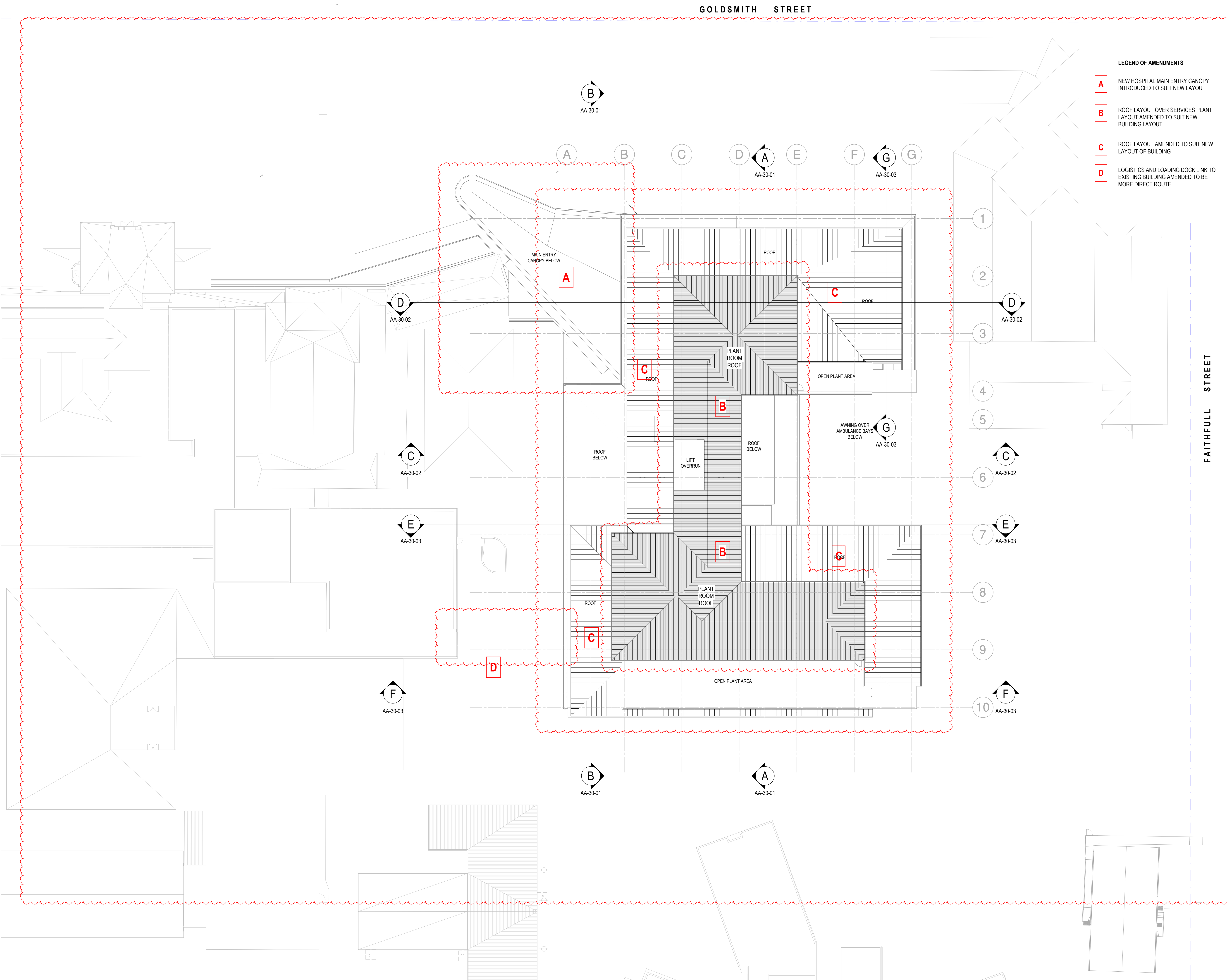
DRAWING TITLE

**PRECINCT PLANS - LEVEL 02 -
S4.55 MODIFICATION
APPLICATION**

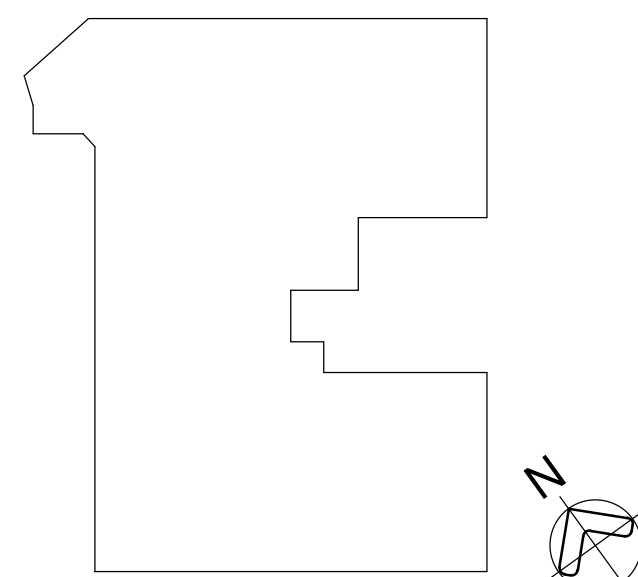
SCALE DATE DRAWN BY CHECKED
1 : 250@A1 08/01/19 MS MS

PROJECT No DRAWING No REVISION
10406.00 AA-10-04 **A**





KEY PLAN

[illegible]

COPYRIGHT

ALL RIGHTS RESERVED. THIS WORK IS COPYRIGHTED AND CANNOT BE REPRODUCED OR COPIED IN ANY FORM OR BY ANY MEANS (GRAPHIC, ELECTRONIC OR MECHANICAL, INCLUDING PHOTOCOPYING) WITHOUT THE WRITTEN PERMISSION OF THE PRINCIPAL UNDER THE TERMS OF THE CONTRACT. ANY LICENCE, EXPRESS OR IMPLIED, TO USE THE DOCUMENT FOR ANY PURPOSE WHATSOEVER IS RESTRICTED TO THE TERMS OF THE AGREEMENT OR IMPLIED AGREEMENT WITH THE PRINCIPAL UNDER THE TERMS OF THE CONTRACT.

DIMENSIONS

USE FIGURED DIMENSIONS, DO NOT SCALE. CONTRACTORS MUST VERIFY ALL DIMENSIONS ON THE SITE BEFORE COMMENCING ANY WORK OR MAKING ANY SHOP DRAWING WHICH MUST BE SUBMITTED AND REVIEWED BEFORE MANUFACTURE.

FIXTURES, FITTINGS & EQUIPMENT SPECIFICATIONS

SUBSTITUTE FIRE EQUIPMENT SPECIFICATIONS

THE FIT-OUT DESIGN AND DOCUMENTATION HAS BEEN COMPLETED ON THE BASIS OF FF&E AND EQUIPMENT ADVISED TO THIS OFFICE AT THE TIME OF BRIEFING THE DESIGN. THE DESIGN PROVISIONS FOR FF&E AND EQUIPMENT INCORPORATES SPATIAL ALLOCATIONS, SERVICING, LOADING AND ACCESS CLEARANCES AND WHERE APPROPRIATE, SERVICE ACCESS AND STORAGE ARE PROVIDED FOR THE EQUIPMENT, FIXTURES AND FITTINGS. IT SHOULD BE NOTED THAT SUBSTITUTE FF&E OR EQUIPMENT WITH ALTERNATE SPECIFICATIONS SHOULD NOT BE PROCURED PRIOR TO VALIDATING THOSE SPECIFICATIONS AGAINST THE ITEM CONTROL SCHEDULE AND DESIGN PROVISIONS IN THE MODEL. THIS OFFICE ACCEPTS NO RESPONSIBILITY FOR THE PROCUREMENT OF SUBSTITUTE FF&E OR EQUIPMENT WHICH HAVE NOT BEEN REVIEWED AND VALIDATED AGAINST THE ORIGINAL DESIGN PROVISIONS.

SERVICE POINTS DISCLAIMER

THE SERVICE POINTS IDENTIFIED ON THESE DRAWINGS HAVE BEEN OVERLAYED FROM THE SERVICES ENGINEERING MODEL, AND ARE PROVIDED FOR INFORMATIONAL PURPOSES. ANY PURCHASE OR USE OF THESE DRAWINGS BY THE SERVICES ENGINEERING MODEL OR ANY OTHER SOURCE, WITHOUT THE WRITTEN CONSENT OF THE CITY OF LOS ANGELES, IS PROHIBITED. THE CITY OF LOS ANGELES DOES NOT WARRANT THE ACCURACY OF THIS DATA. REFER TO THE BUILDING SERVICES ENGINEERING DOCUMENTATION FOR THE INSTALLATION OF THE SERVICES POINTS, AND THE INTERFACE BETWEEN THE SERVICES POINTS AND THE RESPECTIVE ENGINEERING SYSTEMS.

ISSUED FOR INFORMATION

- ARCHITECTS



ABN: 21 134 476 065
 PELACO COMPLEX, BUILDING 3, LEVEL 2
 21-31 GOOD WOOD ST, RICHMOND VIC 3121, AUSTRALIA
 PH: (03) 9885 2333 FAX: (03) 9885 2455

THIS ARCHITECTURAL DESIGN IS THE COPYRIGHT OF
SILVER THOMAS HANLEY (AUS) PTY LTD ABN 21 134 476 065
AND SHALL NOT BE REPRODUCED WITHOUT THEIR WRITTEN PERMISSION



Health Infrastructure

- PROJECT MANAGER



Level 15, 207 Kent Street,
Sydney NSW 2000

PH: (02) 9276 1400

Goulburn Hospital & Health Service Redevelopment

130 Goldsmith St, Goulburn NSW 2580

— DRAWING TITLE

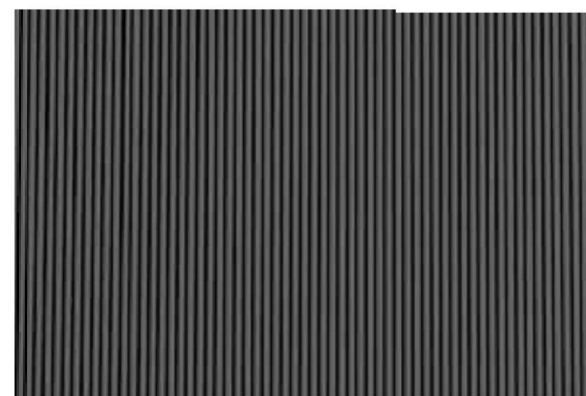
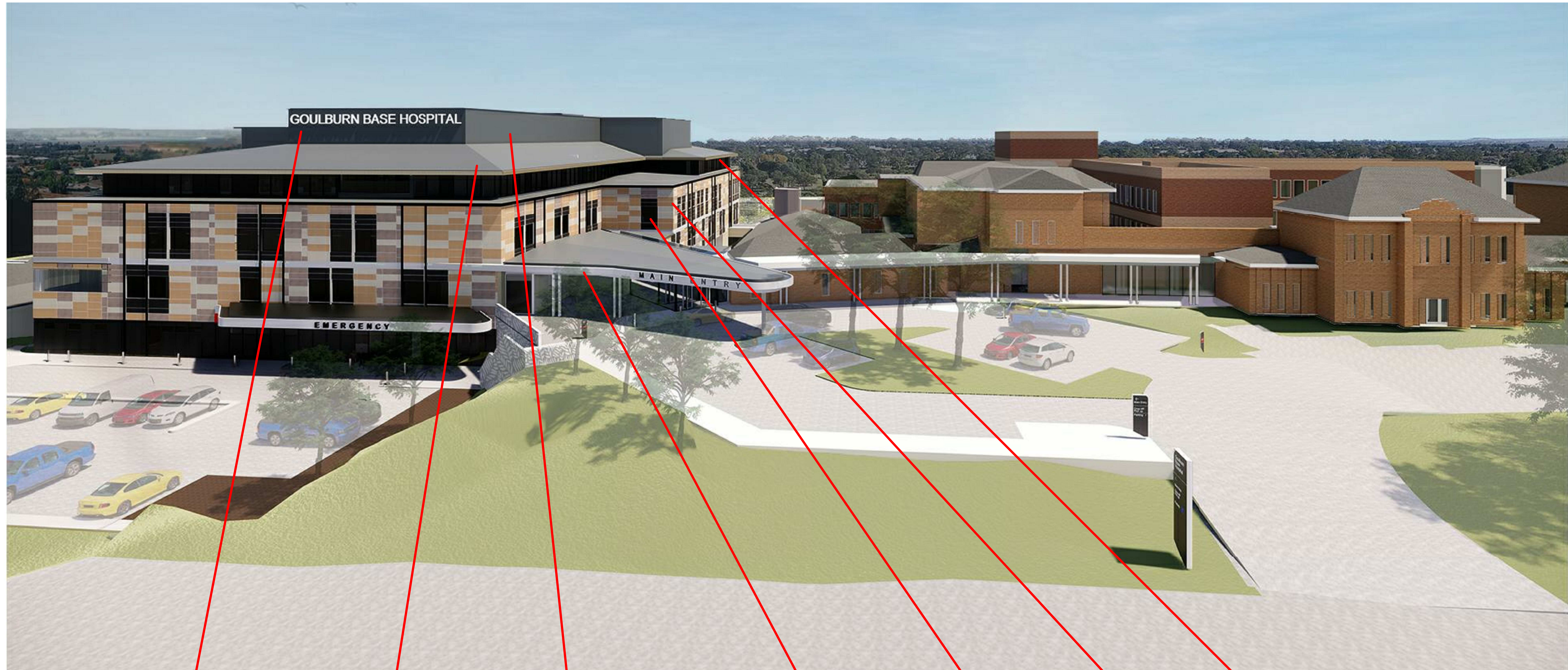
PRECINCT PLANS - ROOF - S4.55 MODIFICATION APPLICATION

SCALE: 1:250@A1 DATE: 08/01/19 DRAWN BY: MS CHECKED: MS

PROJECT No. _____ DRAWING No. _____ REVISION _____

10406.00 AA-10-06

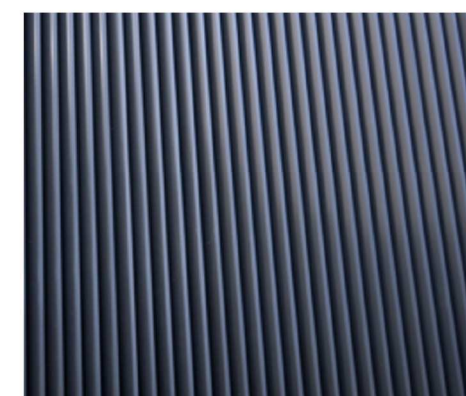
Checked
S
Division
A



VMC VERTICAL METAL CLADDING



MDR PITCHED METAL ROOF



LVA VERTICAL ROOF PLANT LOUVER



LVV VERTICAL STAIR LOUVER



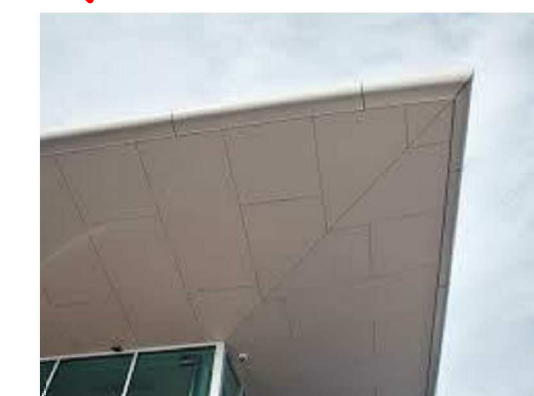
CFC FIBER CEMENT SHEET CLADDING



LVV BLACK ALUMINUM WINDOW FRAMES



PFT PORCELIN STONE LOOK FACARE TILE



CFE CFC EAVES LINING

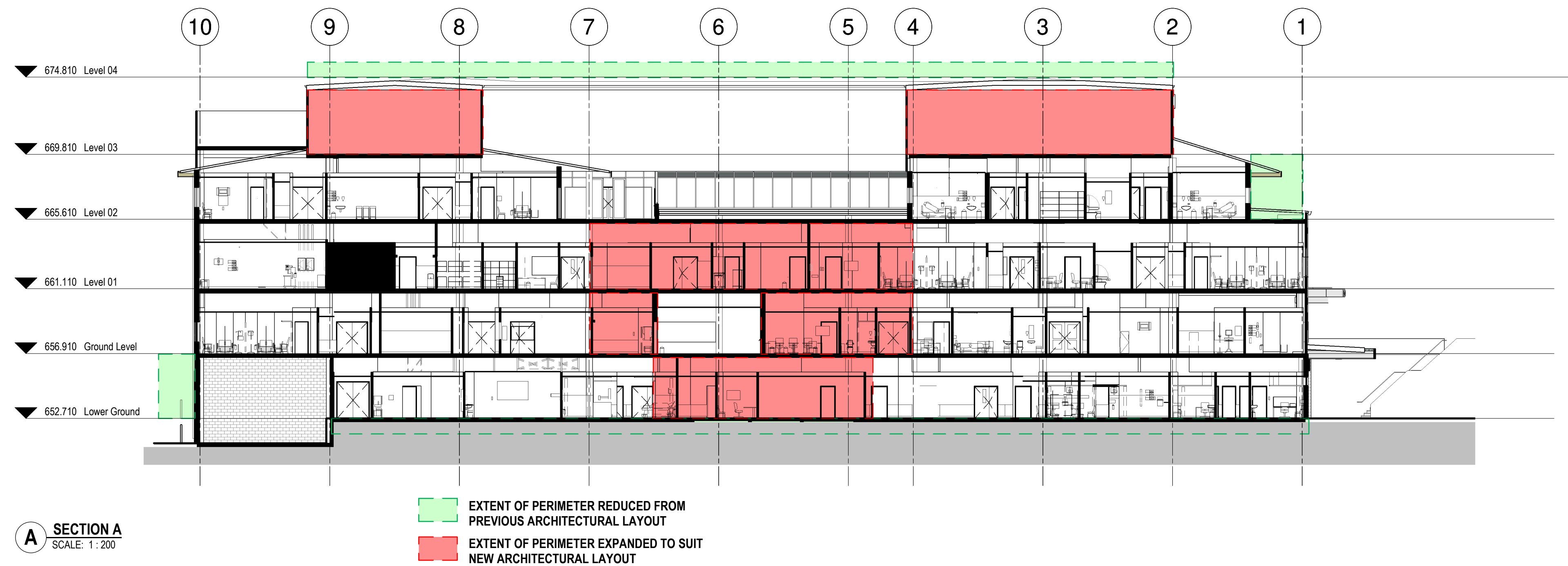
BUILDING PERSPECTIVE

Goulburn Hospital & Health Service Redevelopment

Project Number 10406.00

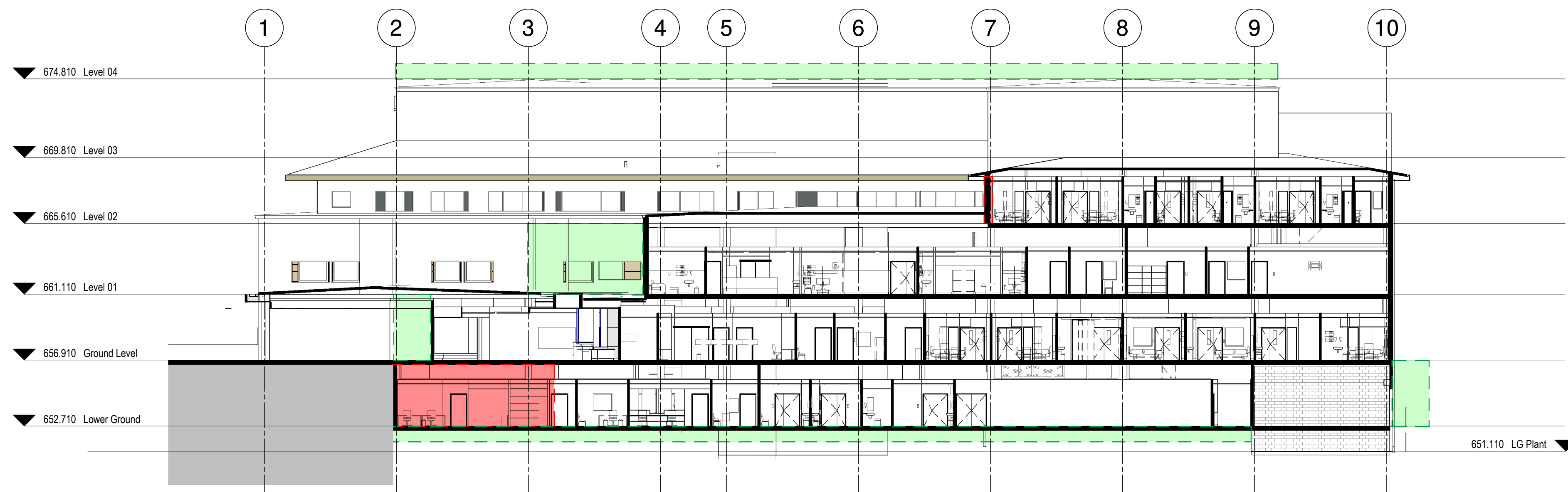
Scale @ A1 Sheet Size As indicated Date 13/09/2019

Drawing Number: AA-21-03



A SECTION A
SCALE: 1 : 200

EXTENT OF PERIMETER REDUCED FROM
PREVIOUS ARCHITECTURAL LAYOUT
EXTENT OF PERIMETER EXPANDED TO SUIT
NEW ARCHITECTURAL LAYOUT



B SECTION B
SCALE: 1 : 200

EXTENT OF PERIMETER REDUCED FROM
PREVIOUS ARCHITECTURAL LAYOUT
EXTENT OF PERIMETER EXPANDED TO SUIT
NEW ARCHITECTURAL LAYOUT

KEY PLAN

REVDESCRIPTIONDRNDATE
A5.455 MODIFICATION APPLICATION SUBMISSIONML13/09/2019

COPYRIGHT
ALL RIGHTS RESERVED. THIS WORK IS COPYRIGHT AND CANNOT BE REPRODUCED OR COPIED IN ANY FORM OR BY ANY MEANS (GRAPHIC, ELECTRONIC OR MECHANICAL, INCLUDING PHOTOCOPYING) WITHOUT THE WRITTEN PERMISSION OF THE PRINCIPAL UNDER THE TERMS OF THE CONTRACT. ANY LICENCE, EXPRESS OR IMPLIED, TO USE THE DOCUMENT FOR ANY PURPOSE WHATSOEVER IS RESTRICTED TO THE TERMS OF THE AGREEMENT OR IMPLIED AGREEMENT WITH THE PRINCIPAL UNDER THE TERMS OF THE CONTRACT.

DIMENSIONS
USE FIGURED DIMENSIONS, DO NOT SCALE. CONTRACTORS MUST VERIFY ALL DIMENSIONS ON THE SITE BEFORE COMMENCING ANY WORK OR MAKING ANY SHOP DRAWING WHICH MUST BE SUBMITTED AND REVIEWED BEFORE MANUFACTURE.

FIXTURES, FITTINGS & EQUIPMENT SPECIFICATIONS
SUBSTITUTE FF&E EQUIPMENT SPECIFICATIONS
THE FIT-OUT DESIGN AND DOCUMENTATION HAS BEEN COMPLETED ON THE BASIS OF FF&E AND EQUIPMENT ADVISED TO THIS OFFICE AT THE TIME OF BRIEFING THE DESIGN. THE DESIGN PROVISIONS FOR FF&E AND EQUIPMENT INCORPORATES SPATIAL ALLOCATIONS, SERVICING, LOADING AND ACCESS CLEARANCES AND WHERE APPROPRIATE SERVICES REQUIREMENTS, HAVING DUE REGARD FOR SURROUNDING FIXTURES AND FITTINGS. IT SHOULD BE NOTED THAT SUBSTITUTE FF&E OR EQUIPMENT WITH ALTERNATE SPECIFICATIONS SHOULD NOT BE PROCURED PRIOR TO VALIDATING THOSE SPECIFICATIONS AGAINST THE ITEM CONTROL SCHEDULE AND DESIGN PROVISIONS IN THE MODEL. THIS OFFICE ACCEPTS NO RESPONSIBILITY FOR THE PROCUREMENT OF SUBSTITUTE FF&E AND EQUIPMENT WHICH HAS NOT BEEN REVIEWED AND VALIDATED AGAINST THE ORIGINAL DESIGN PROVISIONS.

SERVICE POINTS DISCLAIMER
THE SERVICE POINTS IDENTIFIED ON THESE DRAWINGS HAVE BEEN OVERLAYED FROM THE BUILDING SERVICES ENGINEERING MODEL AND ARE PROVIDED FOR INFORMATION AND SET-OUT PURPOSES ONLY. WE HAVE BEEN ADVISED BY THE SERVICES ENGINEERS THAT THE POINTS REPRESENTED ON THESE DRAWINGS ARE CORRECT AT THE TIME OF PUBLICATION. THIS OFFICE DOES NOT WARRANT THE ACCURACY OF THIS DATA. REFER TO THE BUILDING SERVICES ENGINEERING DOCUMENTATION FOR THE INSTALLATION OF THE SERVICES POINTS, AND THE INTERFACE BETWEEN THE SERVICES POINTS AND THE RESPECTIVE ENGINEERING SYSTEMS.

ISSUED FOR INFORMATION

ARCHITECTS

ABN: 21 134 476 065
PELADO COMPLEX, BUILDING 3, LEVEL 2
21-31 GOOD WOOD ST, RICHMOND VIC 3121, AUSTRALIA
PH: (03) 9885 2333 FAX: (03) 9885 2455
THIS ARCHITECTURAL DESIGN IS THE COPYRIGHT OF
SILVER THOMAS HANLEY (AUS) PTY LTD ABN 21 134 476 065
AND SHALL NOT BE REPRODUCED WITHOUT THEIR WRITTEN PERMISSION
CLIENT

PROJECT MANAGER

Level 15, 207 Kent Street,
Sydney NSW 2000
PH: (02) 9276 1400

PROJECT

**Goulburn Hospital & Health
Service Redevelopment**
130 Goldsmith St, Goulburn NSW 2580

DRAWING TITLE

SECTIONS AA & BB

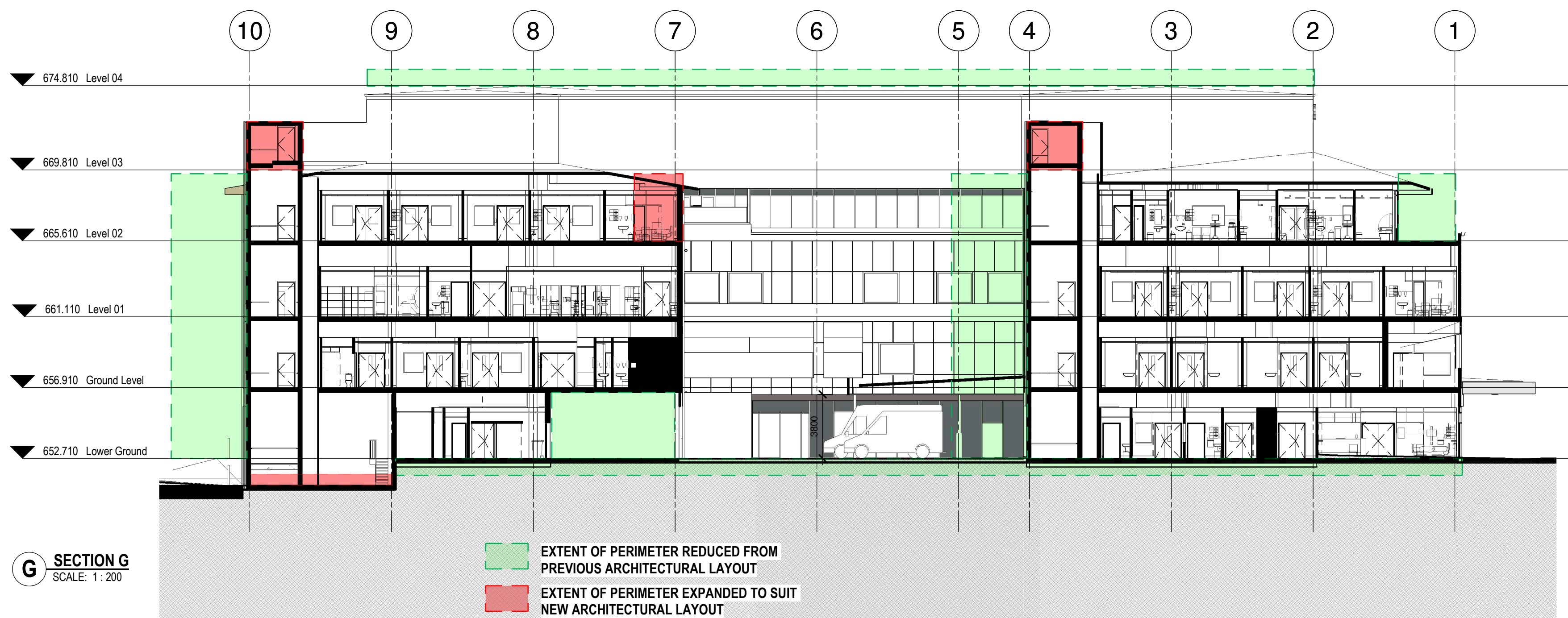
SCALEDATEDRAWN BYCHECKED
1 : 200@A107/29/19AuthorChecker

PROJECT NoDRAWING NoREVISION
10406.00AA-30-01A

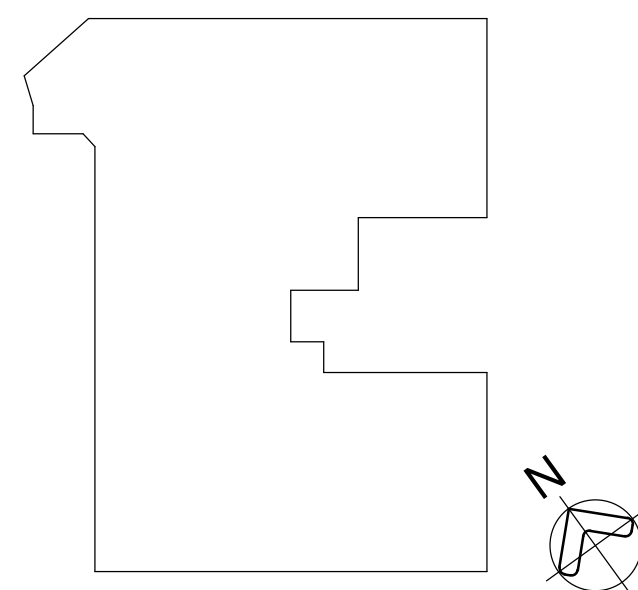
BIM 320/Goulburn Hospital/04 - FACADE_A18.rvt



ED
ker
ON
A



KEY PLAN

[illegible]

COPYRIGHT

ALL RIGHTS RESERVED. THIS WORK IS COPYRIGHT AND CANNOT BE REPRODUCED OR COPIED IN ANY FORM OR BY ANY MEANS (GRAPHIC, ELECTRONIC OR MECHANICAL, INCLUDING PHOTOCOPYING) WITHOUT THE WRITTEN PERMISSION OF THE PRINCIPAL UNDER THE TERMS OF THE CONTRACT. ANY LICENCE, EXPRESS OR IMPLIED, TO USE THE DOCUMENT FOR ANY PURPOSE WHATSOEVER IS RESTRICTED TO THE TERMS OF THE AGREEMENT OR IMPLIED AGREEMENT WITH THE PRINCIPAL UNDER THE TERMS OF THE CONTRACT.

DIMENSIONS

USE FIGURED DIMENSIONS, DO NOT SCALE. CONTRACTORS MUST VERIFY ALL DIMENSIONS ON THE SITE BEFORE COMMENCING ANY WORK OR MAKING ANY SHOP DRAWING WHICH MUST BE SUBMITTED AND REVIEWED BEFORE MANUFACTURE.

FIXTURES, FITTINGS & EQUIPMENT SPECIFICATIONS

SUBSTITUTE FFBE EQUIPMENT SPECIFICATIONS

THE CUT-OUT DESIGN AND DOCUMENTATION HAVE BEEN COMPLETED ON THE BASIS OF FFBE AND EQUIPMENT ADVISED TO THIS OFFICE AT THE TIME OF BRIEFING THE DESIGN THE DESIGN PROVISIONS FOR FFBE AND EQUIPMENT INCORPORATES SPATIAL ALLOCATIONS, SERVICES, LOADING AND ACCESS CLEARANCES AND WHERE APPROPRIATE SERVICES REQUIREMENTS, HAVING OUR REGARD FOR SURROUNDING EXISTENCE AND THE NEED FOR THE SUBSTITUTION OF EQUIPMENT WITH ALTERNATE SPECIFICATIONS SHOULD NOT BE PROCURED PRIOR TO VALIDATING THOSE SPECIFICATIONS AGAINST THE ITEM CONTROL SCHEDULE AND DESIGN PROVISIONS IN THE MODEL. THIS OFFICE ACCEPTS NO RESPONSIBILITY FOR THE ACCURACY OF THE SUBSTITUTION OF EQUIPMENT THAT HAS BEEN REVIEWED AND VALIDATED AGAINST THE ORIGINAL DESIGN PROVISIONS.

SERVICE POINTS DISCLAIMER

THE SERVICE POINTS IDENTIFIED ON THESE DRAWINGS HAVE BEEN OVERLAYED FROM THE BUILDING SERVICES ENGINEERING MODEL, AND ARE PROVIDED FOR INFORMATION AND SET-OUT PURPOSES ONLY. WE HAVE BEEN ADVISED BY THE SERVICES ENGINEER THAT THE POINTS REPRESENTED ON THESE DRAWINGS ARE CORRECT AT THE TIME OF PUBLICATION. THIS OFFICE DOES NOT WARRANT THE ACCURACY OF THIS DATA. REFER TO THE BUILDING SERVICES ENGINEERING DOCUMENTATION FOR THE INSTALLATION OF THE SERVICES POINTS, AND THE INTERFACE BETWEEN THE SERVICES POINTS AND THE RESPECTIVE ENGINEERING SYSTEMS.

ISSUED FOR INFORMATION

— ARCHITECTS



ABN: 21 134 476 065
PELACO COMPLEX, BUILDING 3, LEVEL 2
21-31 GOOD WOOD ST, RICHMOND VIC 3121, AUSTRALIA
PH: (03) 9885 2333 FAX: (03) 9885 2455

PH: (03) 9885 2333 FAX: (03) 9885 2455
THIS ARCHITECTURAL DESIGN IS THE COPYRIGHT OF
SILVER THOMAS HANLEY (AUS) PTY LTD ABN 21 134 476 065
AND SHALL NOT BE REPRODUCED WITHOUT THEIR WRITTEN PERMISSION
CLIENT



- PROJECT MANAGER



Level 15, 207 Kent Street,
Sydney NSW 2000

PH: (02) 9276 1400

PROJECT

Goulburn Hospital & Health Service Redevelopment

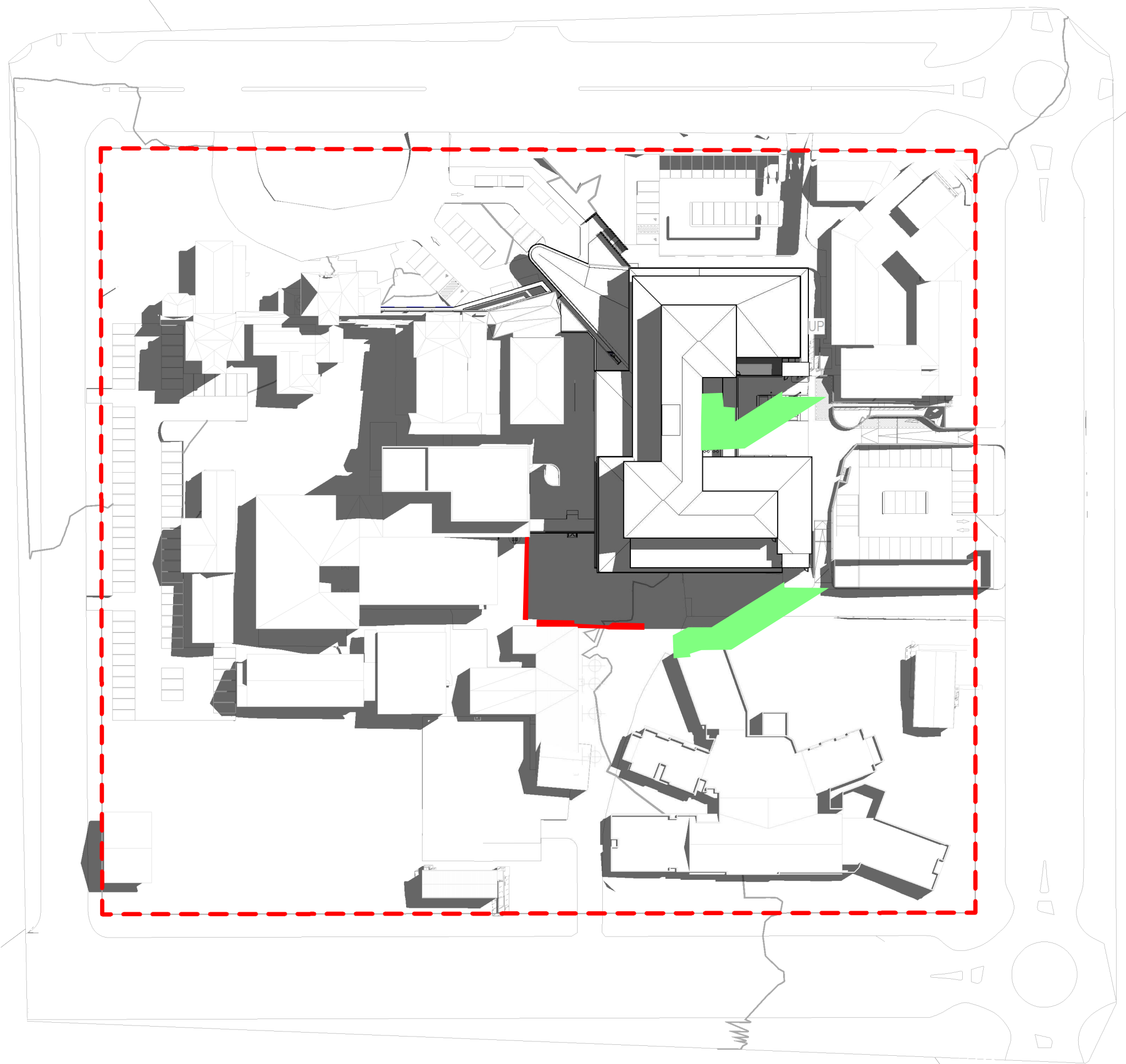
130 Goldsmith St, Goulburn NSW 2580

- DRAWING TITLE

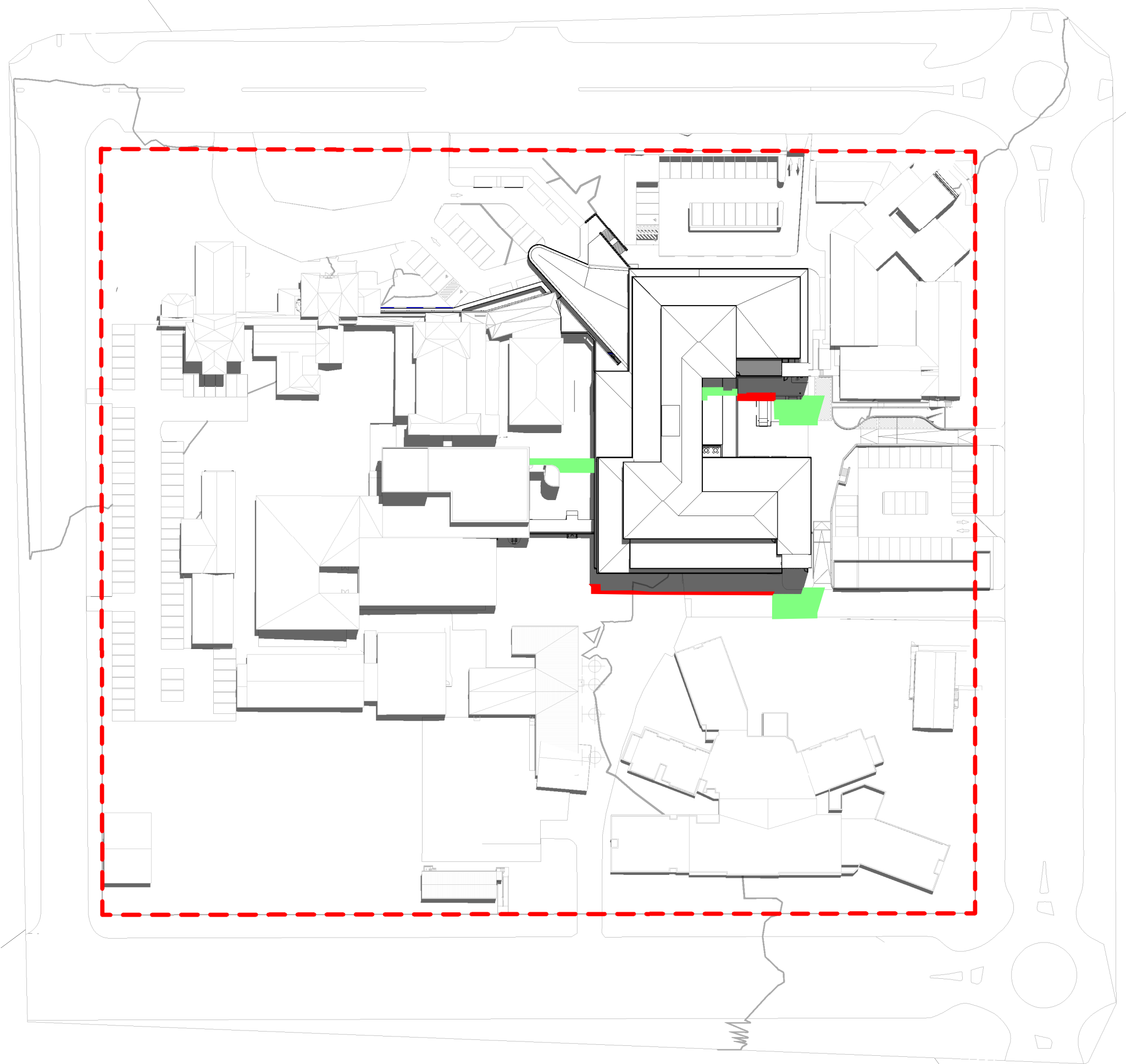
SECTIONS EE, FF & GG

SCALE 1:200@A1 DATE 08/26/19 DRAWN BY Author CHECKED Checker

PROJECT No. _____ DRAWING No. _____ REVISION _____
10406.00 AA-30-03 **A**



1 Summer Solstice 9am - 22 December
SCALE: 1 : 1000



2 Summer Solstice 12pm - 22 December
SCALE: 1 : 1000



3 Summer Solstice 3pm - 22 December
SCALE: 1 : 1000

Reduced Shadow Area
(Previous Scheme).

Additional Shadow Area
(Current Scheme).

KEY PLAN

REV

DESCRIPTION

DRN

DATE

A

5.455 MODIFICATION APPLICATION SUBMISSION

ML

13/09/2019

COPYRIGHT

ALL RIGHTS RESERVED. THIS WORK IS COPYRIGHT AND CANNOT BE REPRODUCED OR COPIED IN ANY FORM OR BY ANY MEANS (GRAPHIC, ELECTRONIC OR MECHANICAL, INCLUDING PHOTOCOPYING) WITHOUT THE WRITTEN PERMISSION OF THE PRINCIPAL UNDER THE TERMS OF THE CONTRACT. ANY LICENCE, EXPRESS OR IMPLIED, TO USE THE DOCUMENT FOR ANY PURPOSE WHATSOEVER IS RESTRICTED TO THE TERMS OF THE AGREEMENT OR IMPLIED AGREEMENT WITH THE PRINCIPAL UNDER THE TERMS OF THE CONTRACT.

DIMENSIONS

USE FIGURED DIMENSIONS. DO NOT SCALE. CONTRACTORS MUST VERIFY ALL DIMENSIONS ON THE SITE BEFORE COMMENCING ANY WORK OR MAKING ANY SHOP DRAWING WHICH MUST BE SUBMITTED AND REVIEWED BEFORE MANUFACTURE.

FIXTURES, FITTINGS & EQUIPMENT SPECIFICATIONS

SUBSTITUTE FF&E EQUIPMENT SPECIFICATIONS
THE FIT-OUT DESIGN AND DOCUMENTATION HAS BEEN COMPLETED ON THE BASIS OF FF&E AND EQUIPMENT ADVISED TO THIS OFFICE AT THE TIME OF BRIEFING THE DESIGN. THE DESIGN PROVISIONS FOR FF&E AND EQUIPMENT INCORPORATES SPATIAL ALLOCATIONS, SERVICES, LOADING AND ACCESS CLEARANCES AND WHERE APPROPRIATE SERVICES REQUIREMENTS, HAVING DUE REGARD FOR SURROUNDING FIXTURES AND FITTINGS. IT SHOULD BE NOTED THAT SUBSTITUTE FF&E OR EQUIPMENT WITH ALTERNATE SPECIFICATIONS SHOULD NOT BE PROCURED PRIOR TO VALIDATING THOSE SPECIFICATIONS AGAINST THE ITEM CONTROL SCHEDULE AND DESIGN PROVISIONS IN THE MODEL. THIS OFFICE ACCEPTS NO RESPONSIBILITY FOR THE PROCUREMENT OF SUBSTITUTE FF&E AND EQUIPMENT WHICH HAS NOT BEEN REVIEWED AND VALIDATED AGAINST THE ORIGINAL DESIGN PROVISIONS.

SERVICE POINTS DISCLAIMER

THE SERVICE POINTS IDENTIFIED ON THESE DRAWINGS HAVE BEEN OVERLAYED FROM THE BUILDING SERVICES ENGINEERING MODEL, AND ARE PROVIDED FOR INFORMATION AND SET-OUT PURPOSES ONLY. WE HAVE BEEN ADVISED BY THE SERVICES ENGINEERS THAT THE POINTS REPRESENTED ON THESE DRAWINGS ARE CORRECT AT THE TIME OF PUBLICATION. THIS OFFICE DOES NOT WARRANT THE ACCURACY OF THIS DATA. REFER TO THE BUILDING SERVICES ENGINEERING DOCUMENTATION FOR THE INSTALLATION OF THE SERVICE POINTS, AND THE INTERFACE BETWEEN THE SERVICE POINTS AND THE RESPECTIVE ENGINEERING SYSTEMS.

ISSUED FOR INFORMATION

ARCHITECTS

ABN: 21 134 476 065
PELADO COMPLEX, BUILDING 3, LEVEL 2
21-31 GOOD WOOD ST, RICHMOND VIC 3121, AUSTRALIA
PH: (03) 9885 2333 FAX: (03) 9885 2455
THIS ARCHITECTURAL DESIGN IS THE COPYRIGHT OF
SILVER THOMAS HANLEY (AUS) PTY LTD ABN 21 134 476 065
AND SHALL NOT BE REPRODUCED WITHOUT THEIR WRITTEN PERMISSION
CLIENT

PROJECT MANAGER

Health
Infrastructure

PROJECT

Level 15, 207 Kent Street,
Sydney NSW 2000
PH: (02) 9276 1400

DRAWING TITLE

**Goulburn Hospital & Health
Service Redevelopment**
130 Goldsmith St, Goulburn NSW 2580

SCALE

DATE

DRAWN BY

CHECKED

1 :
1000@A1

08/26/19

Author

Checker

PROJECT No

DRAWING No

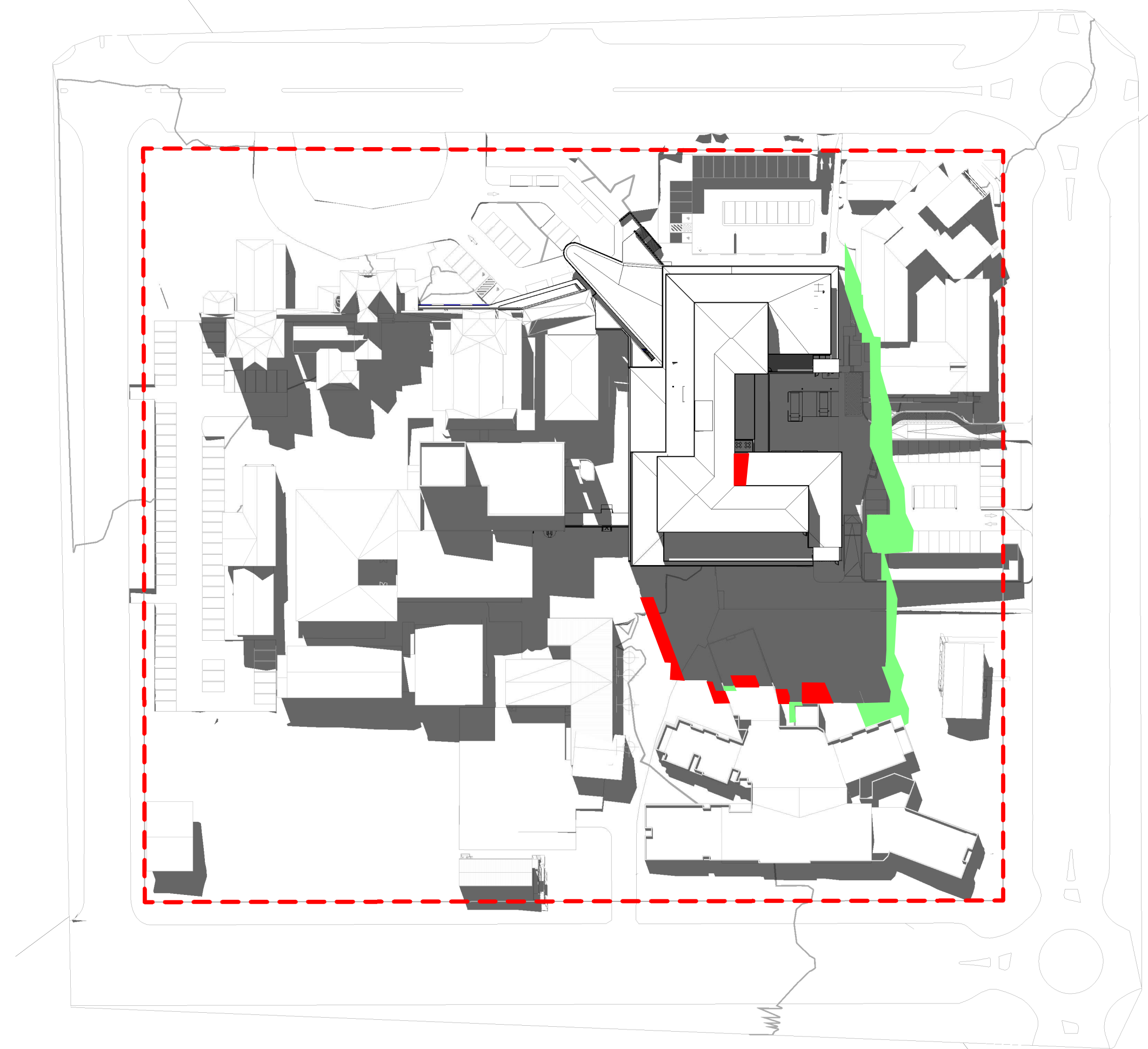
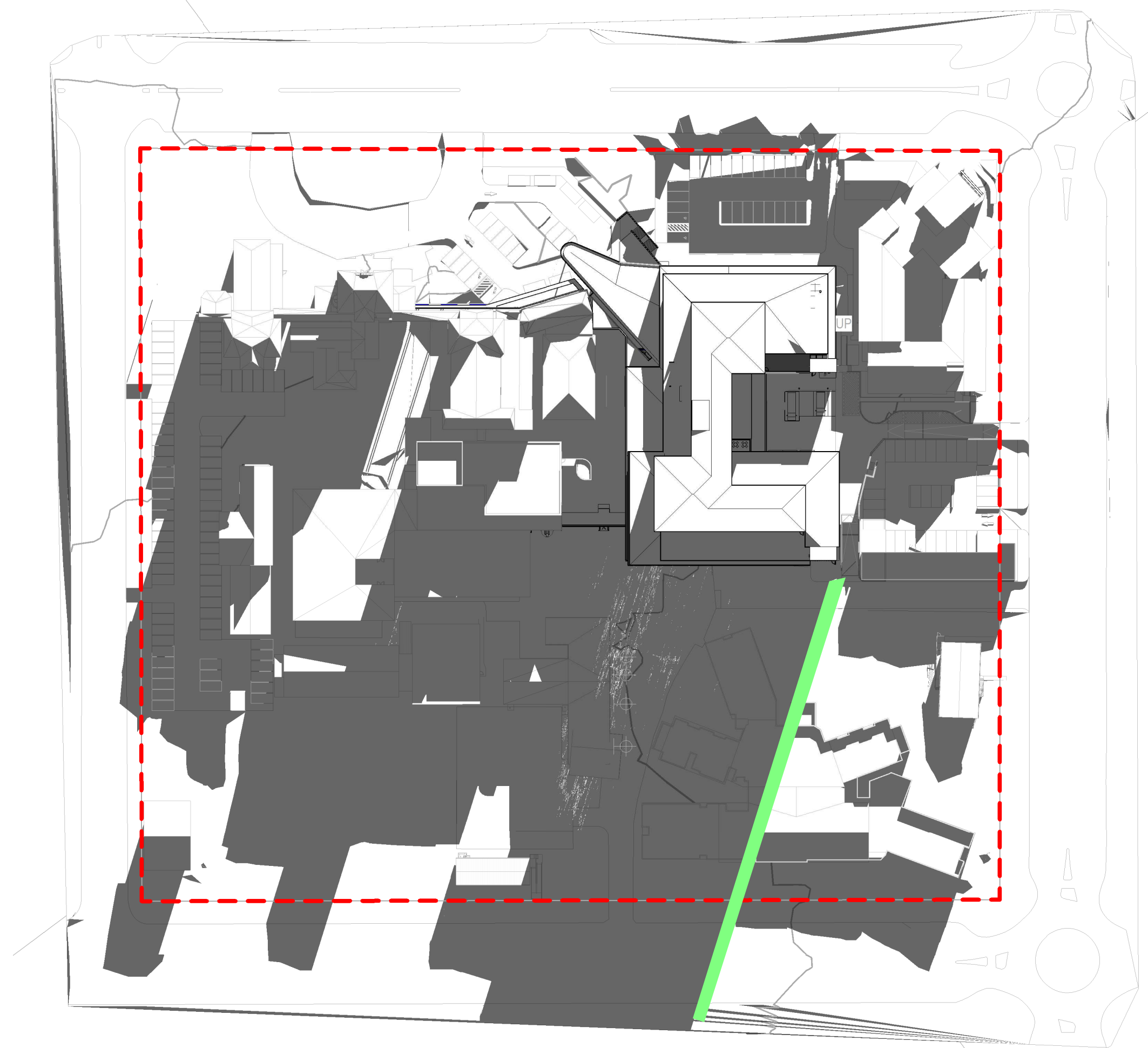
REVISION


10406.00


AA-98-0001

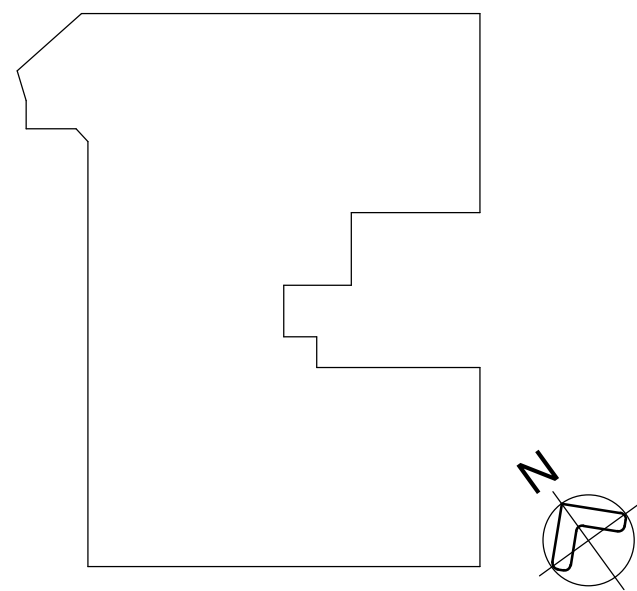
A

BIM 3201 Goulburn Hospital/CH - BUILDING - A15.rvt



 Reduced Shadow Area (Previous Scheme).

 Additional Shadow Area (Current Scheme).

[illegible]

COPYRIGHT

ALL RIGHTS RESERVED. THIS WORK IS COPYRIGHTED AND CANNOT BE REPRODUCED OR COPIED IN ANY FORM OR BY ANY MEANS (GRAPHIC, ELECTRONIC OR MECHANICAL, INCLUDING PHOTOCOPYING) WITHOUT THE WRITTEN PERMISSION OF THE PRINCIPAL UNDER THE TERMS OF THE CONTRACT. ANY LICENCE, EXPRESS OR IMPLIED, TO USE THE DOCUMENT FOR ANY PURPOSE WHATSOEVER IS RESTRICTED TO THE TERMS OF THE AGREEMENT OR IMPLIED AGREEMENT WITH THE PRINCIPAL UNDER THE TERMS OF THE CONTRACT.

DIMENSIONS

USE FIGURED DIMENSIONS, DO NOT SCALE. CONTRACTORS MUST VERIFY ALL DIMENSIONS ON THE SITE BEFORE COMMENCING ANY WORK OR MAKING ANY SHOP DRAWING WHICH MUST BE SUBMITTED AND REVIEWED BEFORE MANUFACTURE.

FIXTURES, FITTINGS & EQUIPMENT SPECIFICATIONS

SUBSTITUTE FF&E EQUIPMENT SPECIFICATIONS

THE FIT-OUT DESIGN AND DOCUMENTATION HAS BEEN COMPLETED ON THE BASIS OF FF&E AND EQUIPMENT ADVISED TO THIS OFFICE AT THE TIME OF BRIEFING THE DESIGN. THE DESIGN PROVISIONS FOR FF&E AND EQUIPMENT INCORPORATES SPATIAL ALLOCATIONS, SERVICING, LOADING AND UNLOADING APPEARANCES AND WHERE NECESSARY, SERVICE ACCESS, STORAGE, HAVING DEDICATED SPACE FOR SURROUNDING FIXTURES AND FITTINGS. IT SHOULD BE NOTED THAT SUBSTITUTE FF&E OR EQUIPMENT WITH ALTERNATE SPECIFICATIONS SHOULD NOT BE PROCURED PRIOR TO VALIDATING THOSE SPECIFICATIONS AGAINST THE ITEM CONTROL SCHEDULE AND DESIGN REQUIREMENTS IN THE APPROVED FIT-OUT DESIGN. THE APPROVED FIT-OUT FOR THE PROCUREMENT OF SUBSTITUTE FF&E AND EQUIPMENT WHICH HAS NOT BEEN REVIEWED AND VALIDATED AGAINST THE ORIGINAL DESIGN PROVISIONS.

SERVICE POINTS DISCLAIMER

THE SERVICE POINTS IDENTIFIED ON THESE DRAWINGS HAVE BEEN OVERLAYED FROM THE BUILDING SERVICES ENGINEERING MODEL, AND ARE PROVIDED FOR INFORMATION AND SET-OUT PURPOSE ONLY. WE HAVE BEEN ADVISED BY THE SERVICES ENGINEERS THAT THE POINTS REPRESENTED ON THESE DRAWINGS ARE CORRECT AT THE TIME OF PUBLICATION. THIS OFFICE DOES NOT WARRANT THE ACCURACY OF THIS DATA. REFER TO THE BUILDING SERVICES ENGINEERING DOCUMENTATION FOR THE INSTALLATION OF THE SERVICES POINTS, AND THE INTERFACE BETWEEN THE SERVICES POINTS AND THE RESPECTIVE ENGINEERING SYSTEMS.

— ARCHITECTS



ABN: 21 134 476 065
 PELACO COMPLEX, BUILDING 3, LEVEL 2
 21-31 GOOD WOOD ST, RICHMOND VIC 3121, AUSTRALIA
 PH: (03) 9885 2333 FAX: (03) 9885 2455
 THIS ARCHITECTURAL DESIGN IS THE COPYRIGHT OF
 SILVER THOMAS HANLEY (AUS) PTY LTD ABN 21 134 476 065
 AND SHALL NOT BE REPRODUCED WITHOUT THEIR WRITTEN PERMISSION
 CLIENT



— PROJECT MANAGER



**Level 15, 207 Kent Street,
Sydney NSW 2000**

PH: (02) 9276 1400

PROJECT

Goulburn Hospital & Health Service Redevelopment

130 Goldsmith St, Goulburn NSW 2580

— DRAWING TITLE

SHADOW DIAGRAMS - WINTER SOLSTICE

SCALE _____ DATE _____ DRAWN BY _____ CHECKED _____
1 : 06/28/19 MS MS
1000@A1
PROJECT No _____ DRAWING No _____ REVISION _____
10406.00 AA-98-0002 **A**

